

WEST REGION BLUEWAY & TRAIL SYSTEM MASTER PLAN



Great Parks is leading the development of a master plan for the **West Region Blueway & Trail System** – a new initiative to bring people closer to nature by expanding opportunities for water- and land-based adventure in western Hamilton County.

As part of Great Parks' 2019 Comprehensive Master Plan, the new West Region Blueway & Trail System will also create new connections between the highly popular Great Miami Riverway trail in Montgomery and Butler counties and the Ohio River Trail and Ohio River Way.

The West Region Blueway & Trail System master plan will identify opportunities for a shared-use trail and river access points along the Great Miami and Whitewater rivers and in four of Great Parks' riverfront destinations:

- Campbell Lakes
- Miami Whitewater Forest
- Mitchell Memorial Forest
- Shawnee Lookout

Together, these new resources will allow residents and visitors to *find their wild* by creating their own unique outdoor adventures with trip lengths ranging from a few hours to multiple days.

COMMUNITY ENGAGEMENT

Great Parks will be partnering with local communities throughout western Hamilton County to develop project ideas and strategies. Input from user groups and the general public will also be key to helping guide development of the master plan and its implementation, as all have a stake in what it will offer and its ultimate success

Development of the West Region Blueway & Trail System master plan will continue through mid-2024.

GreatParks.org/WestRegionTrails

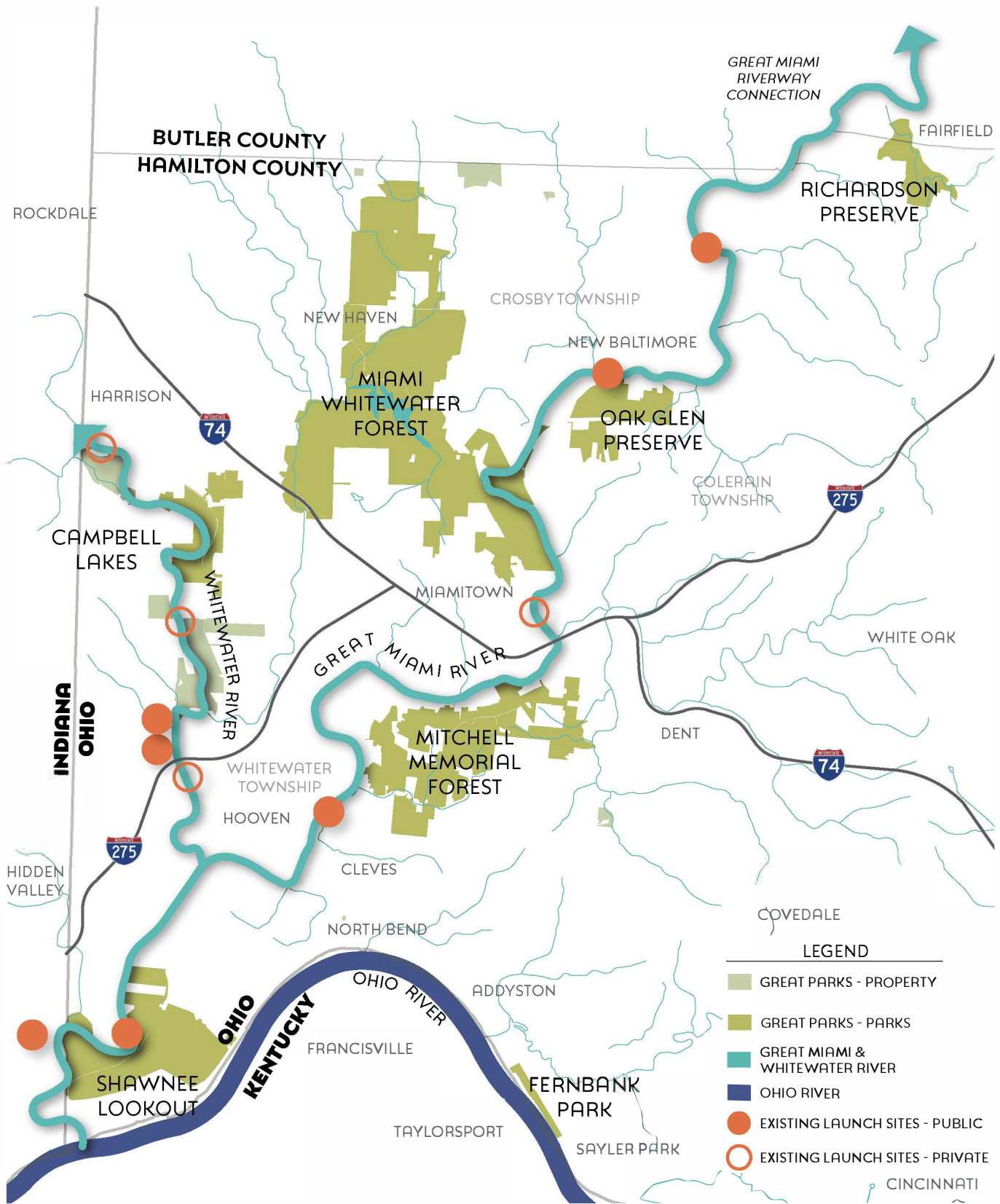
WEST REGION BLUEWAY & TRAIL SYSTEM MASTER PLAN GOALS

- Identify strategies for establishing a blueway trail system for paddlers with put-in and take-out access points on the Great Miami and Whitewater rivers
- Identify access point locations and develop design concepts for four to five canoe/kayak launch sites along the blueway trail
- Prepare a master plan for a shared-use trail system along the Great Miami River



what is a blueway?

A blueway, or water trail, is a connected stretch of waterways, such as rivers, lakes, canals or shorelines, that feature launch points, camping locations and other points of interest to provide recreational opportunities for canoeists, kayakers and other paddlers.



West Region Blueway & Trail System Study Area

