



# **WEST REGION BLUEWAY & TRAIL SYSTEM**

Advisory Committee | June 15, 2023



**Great Parks**

# WELCOME!



🌿 **Introductions**

🌿 **Project Scope**

🌿 **Blueways**

- Engagement Activity

🌿 **Shared-use Trail**

- Engagement Activity

🌿 **Public Outreach Plan**

- Engagement Activity

🌿 **Project Timeline**

🌿 **Next Steps**



# ADVISORY COMMITTEE



## 🌿 Tap into local knowledge and expertise to help:

- Identify project opportunities and challenges
- Guide project development and eventual implementation
- Build support and excitement about the project among their constituencies

### Local Communities/Jurisdictions

City of Fairfield  
City of Harrison  
Colerain Township, Hamilton County, Ohio  
Crosby Township, Hamilton County, Ohio  
Harrison Township, Hamilton County, Ohio  
Miami Township, Hamilton County, Ohio  
Ross Township, Butler County, Ohio  
Village of Cleves  
Whitewater Township, Hamilton County, Ohio

### Key Interest Groups

1 Dearborn  
Cardinal Land Conservancy  
Green Umbrella, Greenspace Impact Team  
Great Miami Riverway Coalition  
Hamilton County Engineer's Office  
Metropolitan Sewer District of Greater Cincinnati  
Ohio-Kentucky-Indiana Regional Council of Governments (OKI)  
Ohio River Way  
Oxbow, Inc.  
River's Unlimited  
Tri-State Trails  
Western Wildlife Corridor





# INTRODUCTIONS



**Great Parks**

# INTRODUCTIONS



## 🌿 **Great Parks**

## 🌿 **Members in attendance**

## 🌿 **Consulting Team**

- Kimley-Horn
- Human Nature
- Rasor
- Terracon
- RWA Architects
- 143 Engineers



# 2019 COMPREHENSIVE MASTER PLAN PRIORITIES



Build more trails

Establish a defined blueway system

Add programming and events  
for diverse audiences

Build ecological resiliency and sustainability

Provide access to conservation areas

Expand access for all users

Focus on partnerships

Plan for the future of every park



# PARK AND FACILITY MASTER PLAN THEMES



## **ADD MORE TRAILS & ADVENTURE**

Hiking/walking trails, mountain biking, regional trails, blueway trails

## **REFRESH HARBORS & EXPERIENCES**

Harbors, playgrounds, camping, disc golf

## **BUILD NEW NATURE, EDUCATION, & EVENT CENTERS**

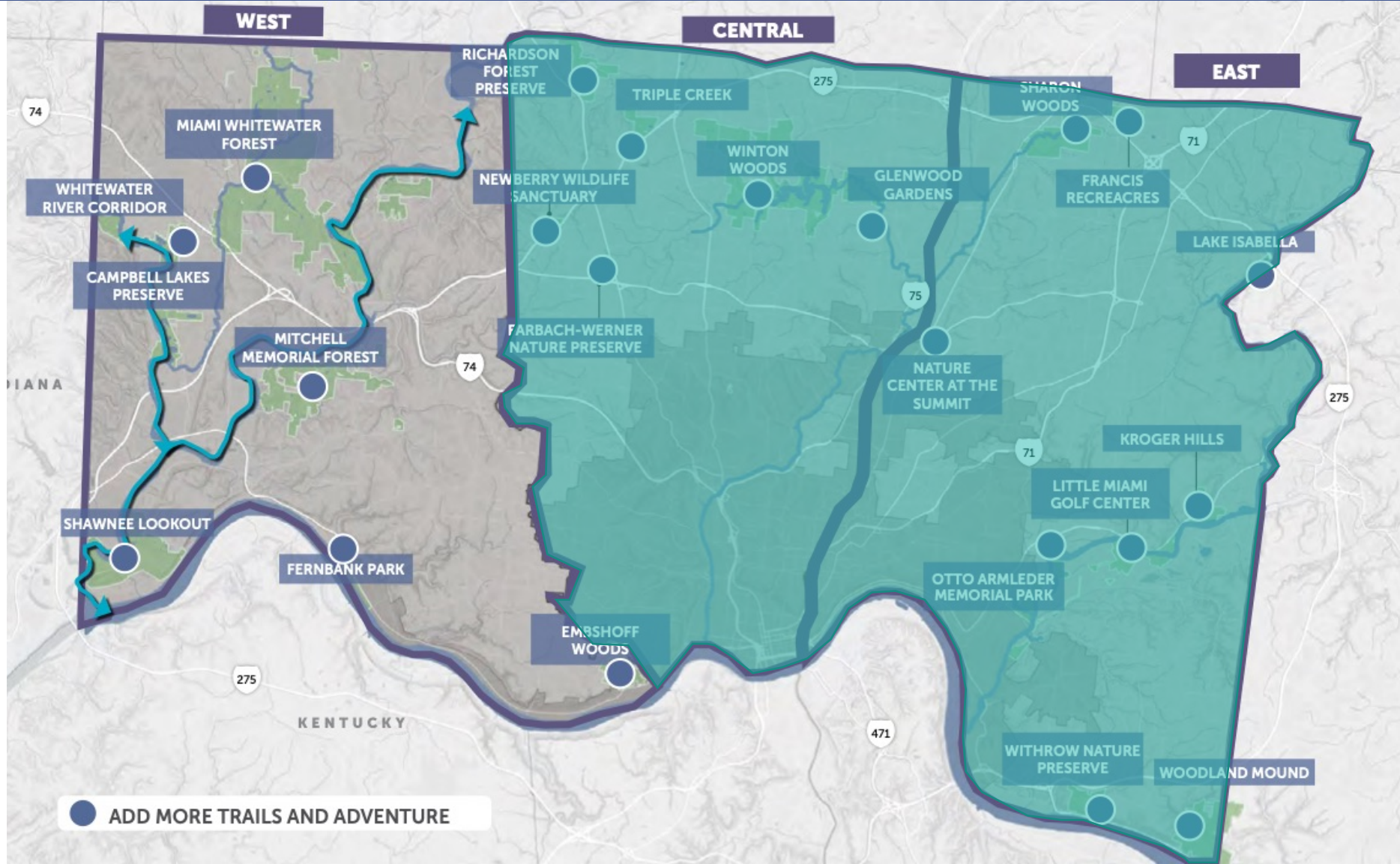
Education and event centers in each region

## **IMPLEMENT CONSERVATION PROJECTS**

Mature forest management, stream and wetland restoration, golf course restoration, stormwater management



# STUDY AREA

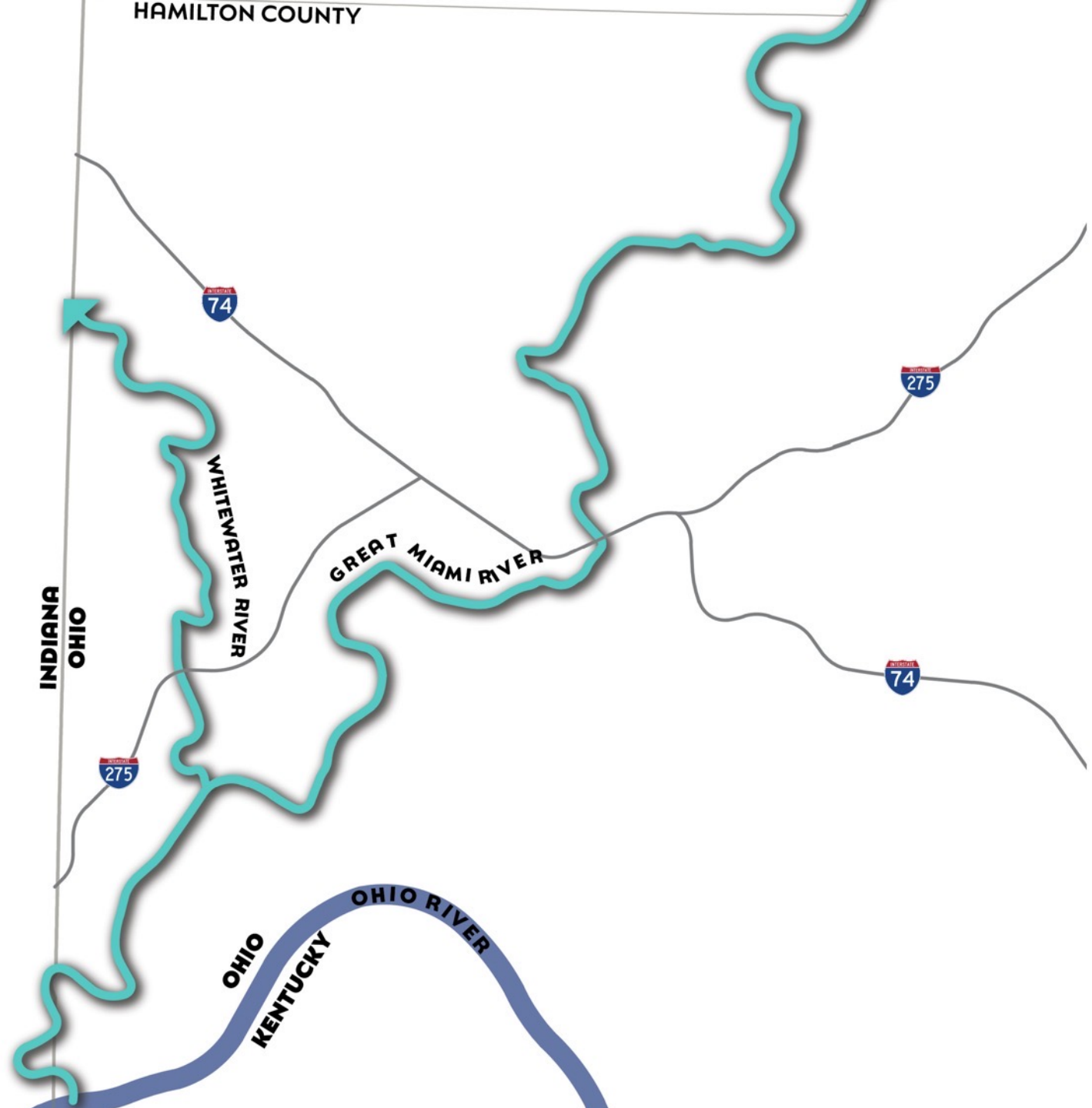




# STUDY AREA

## Three major rivers

- Great Miami River  
27.1 miles
- Whitewater River  
8.8 miles
- Ohio River



# STUDY AREA

## Four Great Parks

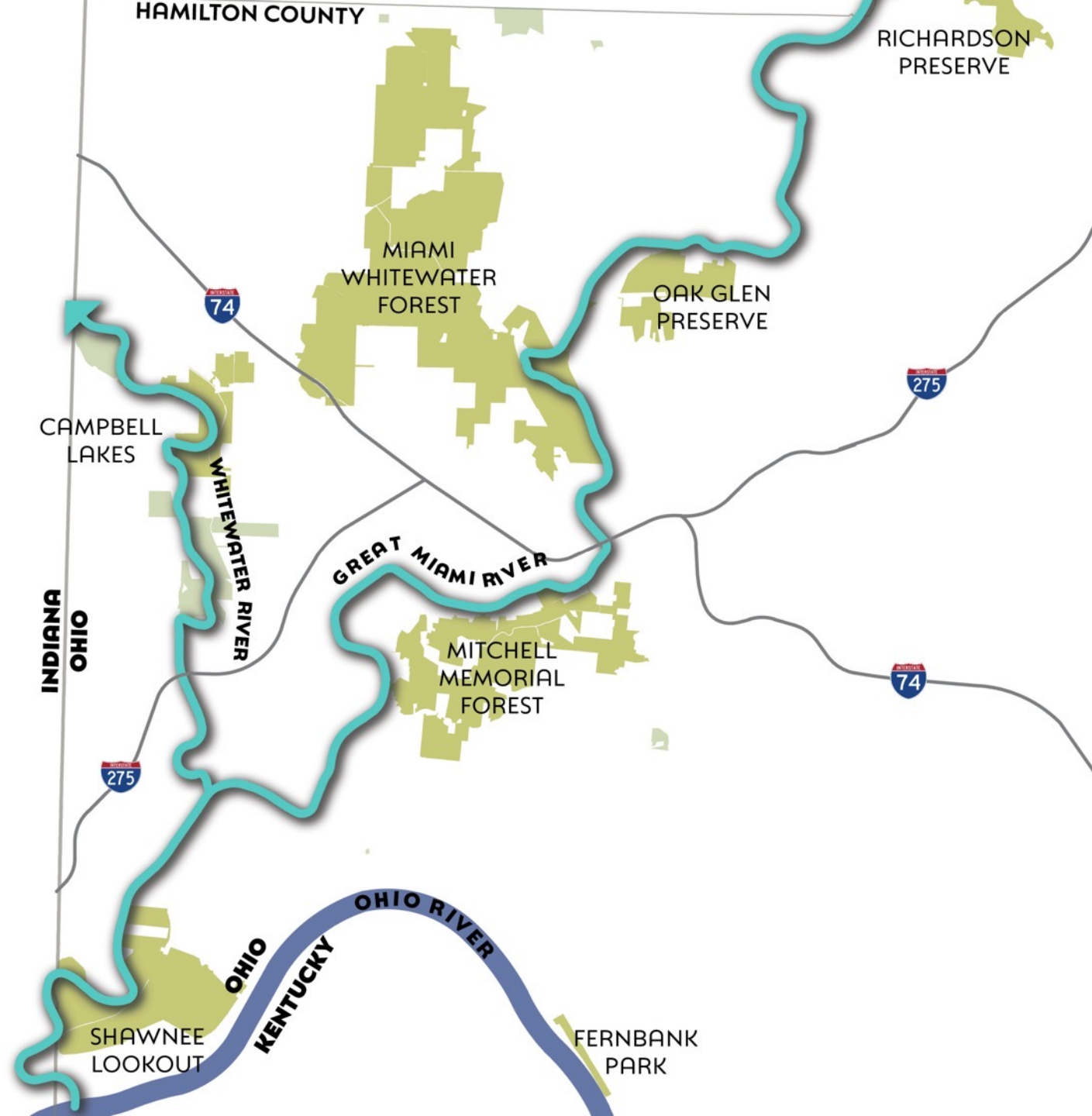
- Miami Whitewater Forest
- Mitchell Memorial Forest
- Campbell Lakes
- Shawnee Lookout

## Two Great Park preserves

- Richardson Preserve
- Oak Glen Preserve

## Other Great Parks holdings

## Multiple community parks



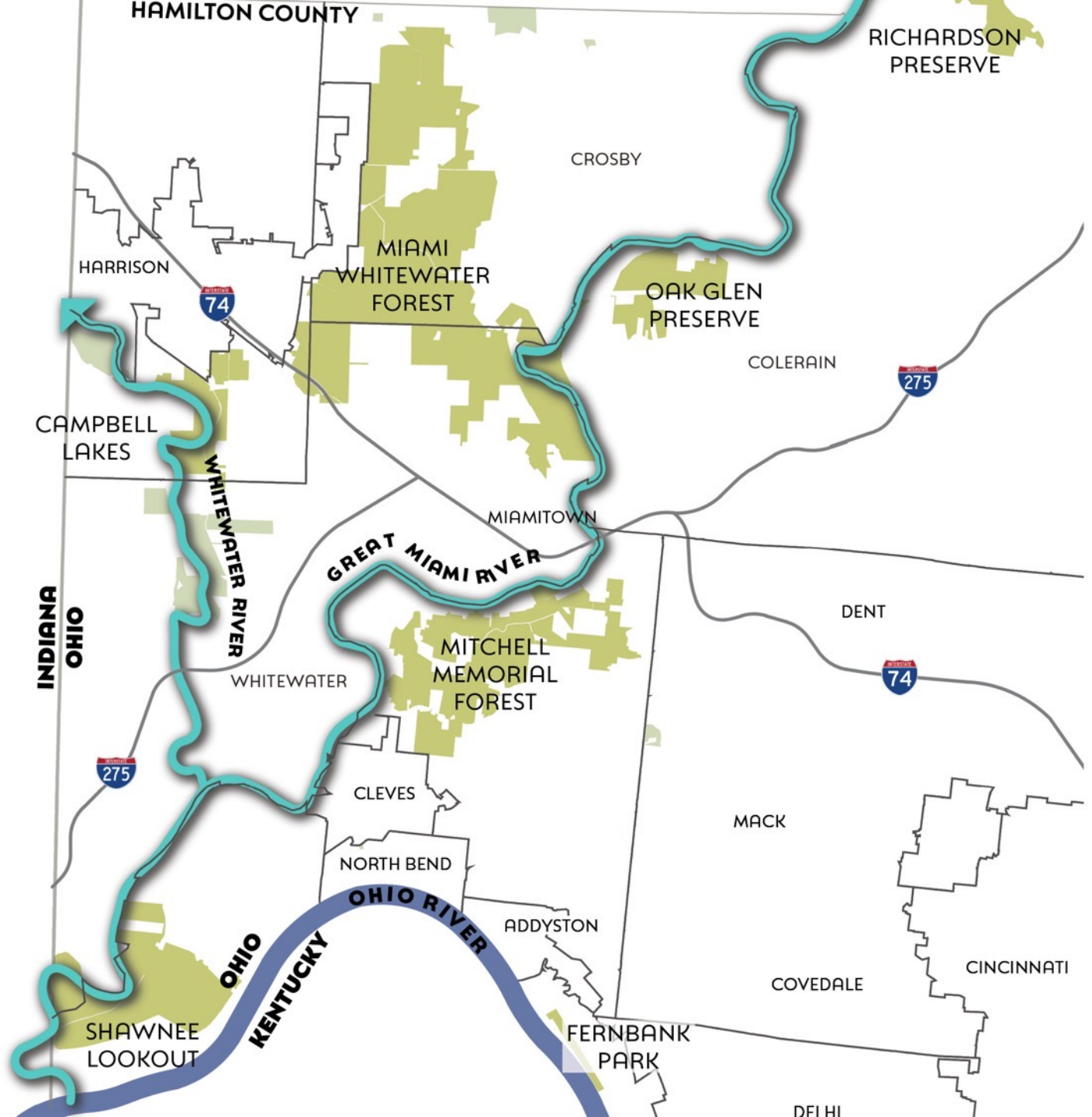
# STUDY AREA

## 🌿 Townships

- Colerain Township
- Crosby Township
- Harrison Township
- Miami Township
- Whitewater Township
- Ross Township (Butler County)

## 🌿 Communities

- City of Fairfield (Butler County)
- City of Harrison
- Village of Cleves
- Village of North Bend
- Dearborn County, Indiana





# PROJECT SCOPE

*Bring people closer to nature by expanding opportunities for water and land-based adventure in western Hamilton County*



**Great Parks**

# WEST REGION BLUEWAY & TRAIL SYSTEM MASTER PLAN GOALS



- ✦ **Expand and strengthen** western Hamilton County's blueway
- ✦ Identify **four to five new access points** along the blueway trail and develop design concepts
- ✦ Prepare plans for a **shared-use trail** along the Great Miami River corridor



# ADDITIONAL OPPORTUNITIES



- Find opportunities to create new indoor and outdoor **educational space**
- Identify existing **points of interest** and locations for **additional amenities** such as rustic camping
- Promote the **history and culture** of the corridors
- Identify possible **habitat restoration** opportunities



# BLUEWAY TRAIL ENHANCEMENT



# BLUEWAY TRAIL ENHANCEMENT



A blueway, or water trail, is a network of connected waterways that feature managed access points, clear signage, and recreational amenities for canoeists, kayakers, and other paddlers to enjoy.





# BLUEWAY ACCESS PRECEDENTS

## Chattahoochee RiverLands Master Plan

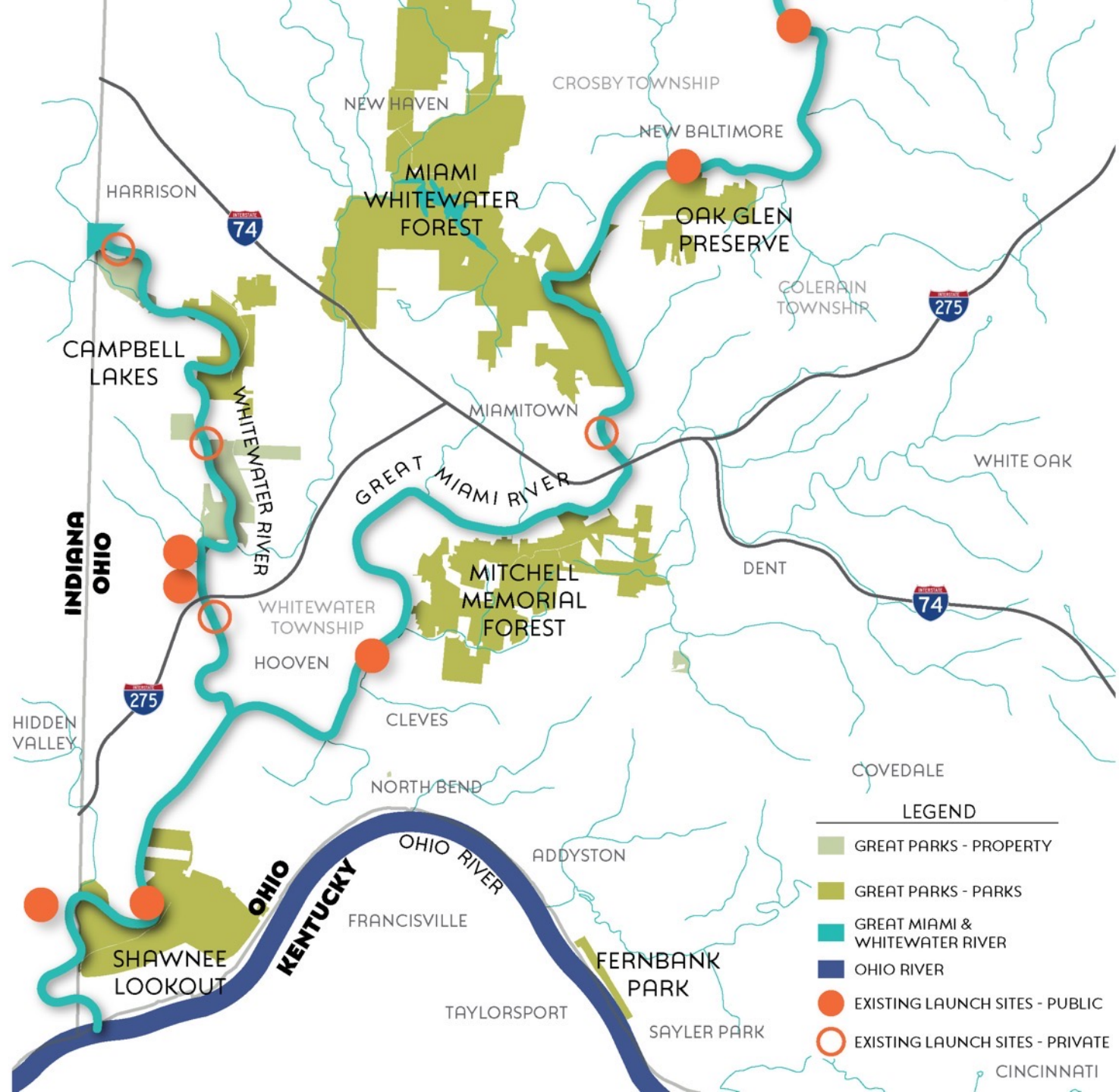


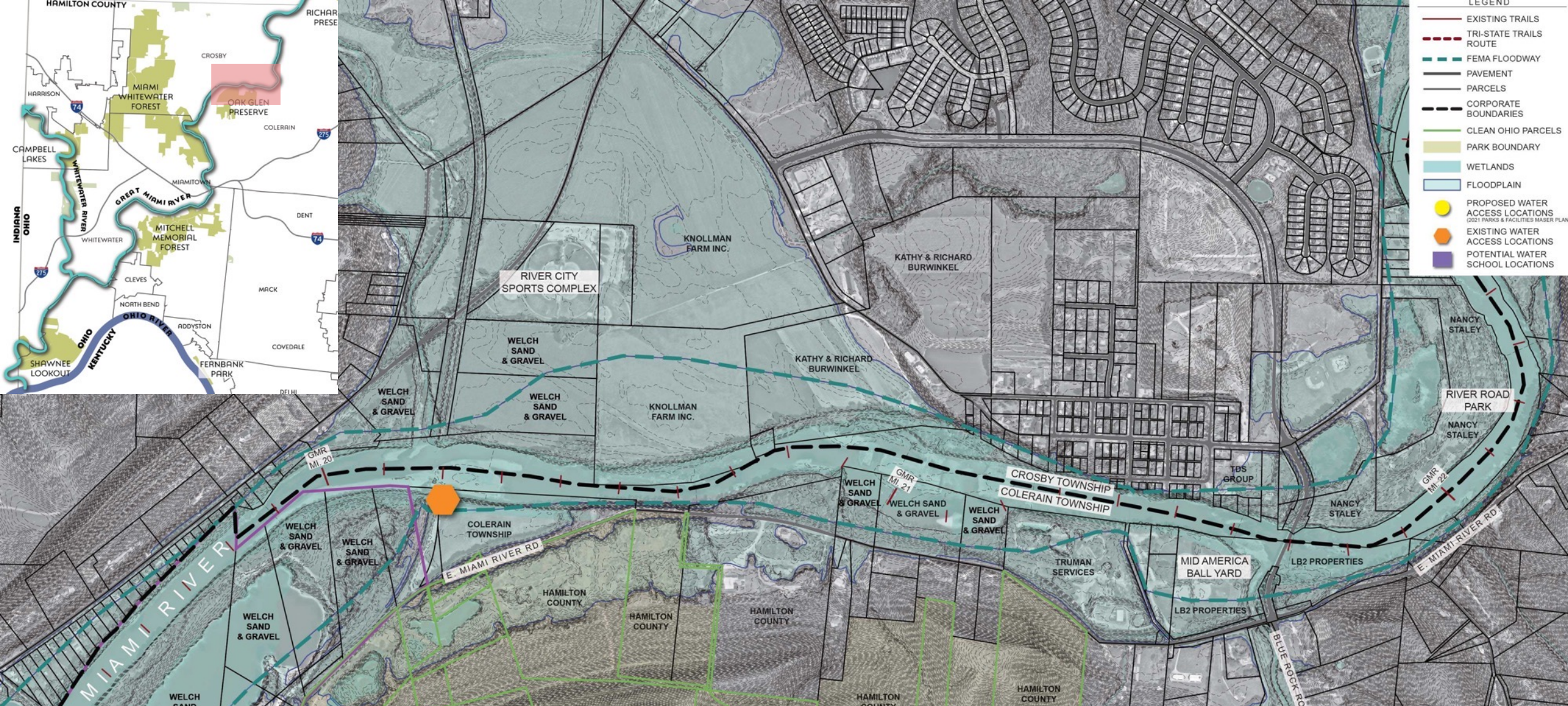
- 104 mi of blueway programming
- 42 access points (2mi avg distribution)

# BLUEWAY ACCESS



CANOE AND  
KAYAK LAUNCH





# DETAILED REVIEW OF ACCESS SITES



# BLUEWAY CHARACTER IMAGES

## Natural



# BLUEWAY CHARACTER IMAGES

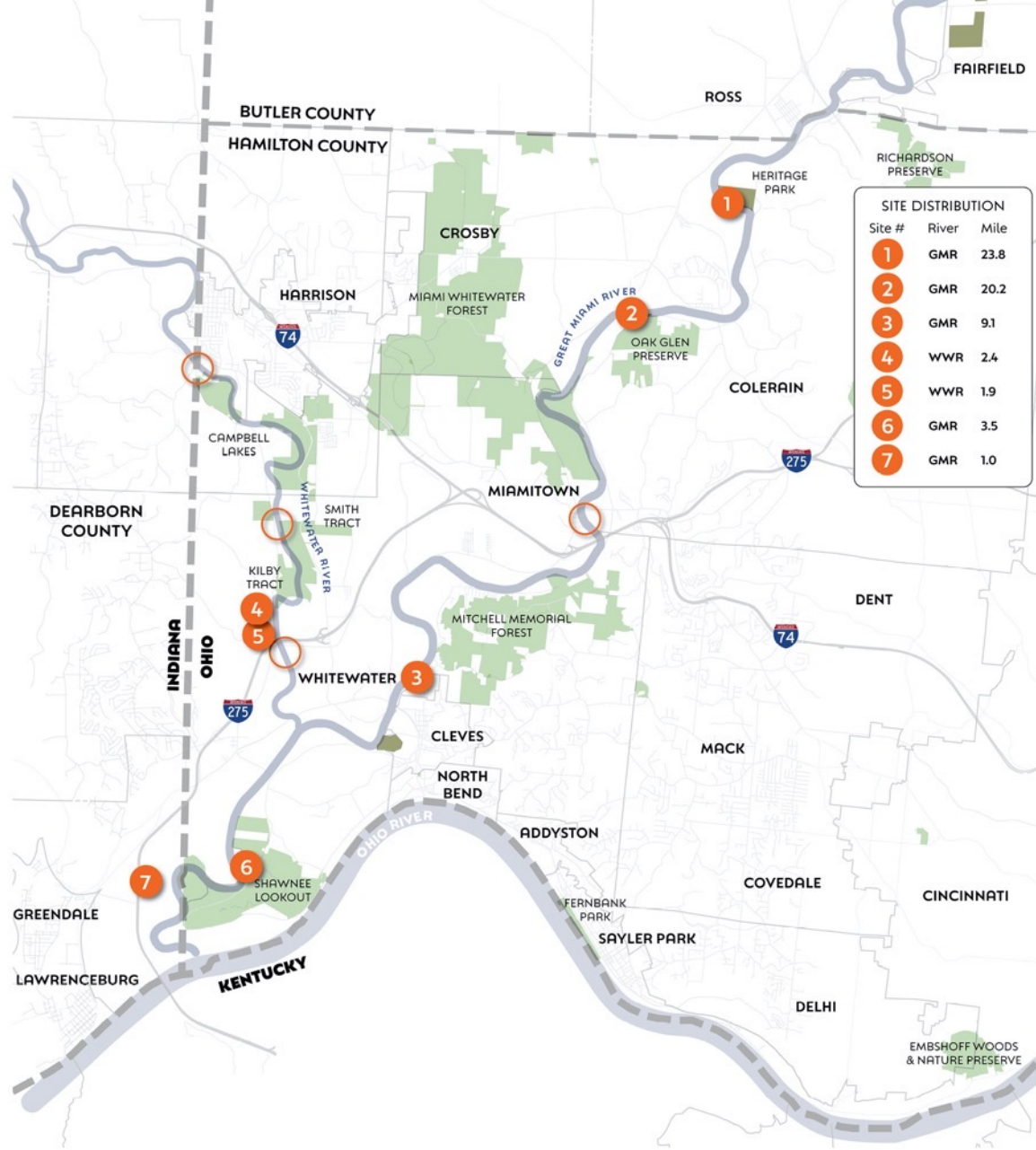
## Enhanced



# BLUEWAY CHARACTER IMAGES

## Constructed





# REGIONAL INVENTORY

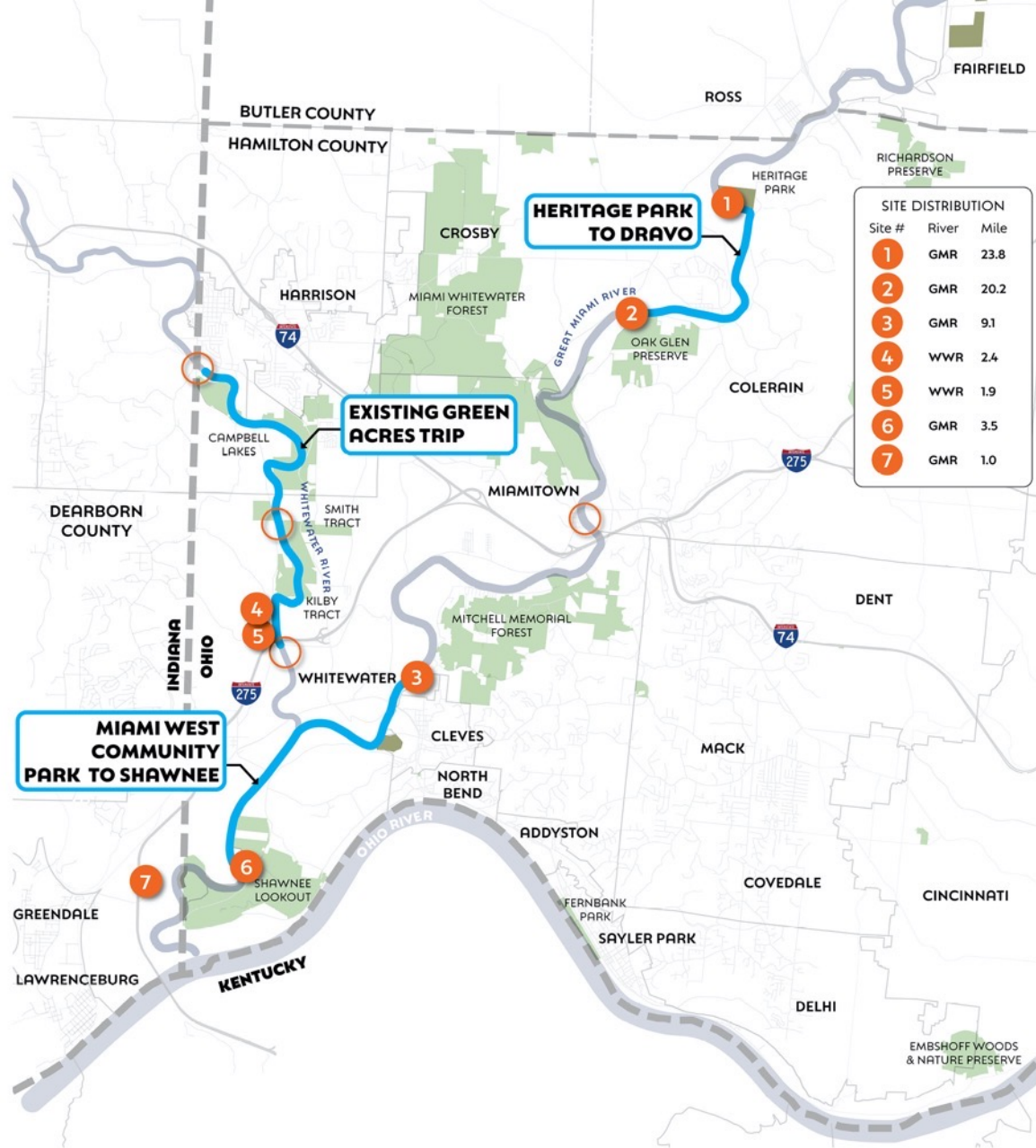
Existing Launch Site Distribution



**LEGEND**

- EXISTING LAUNCH SITES PUBLIC
- EXISTING LAUNCH SITES PRIVATE





# REGIONAL INVENTORY

Paddle Trip Time

## Existing Green Acres Trip

- 7.0 miles
- 2 to 4 hour travel time

## Heritage Park to Dravo Park

- 3.6 miles
- 1 to 2 hour travel time

## Miami West Community Park to Shawnee Lookout

- 5.6 miles
- 2 to 3 hour travel time



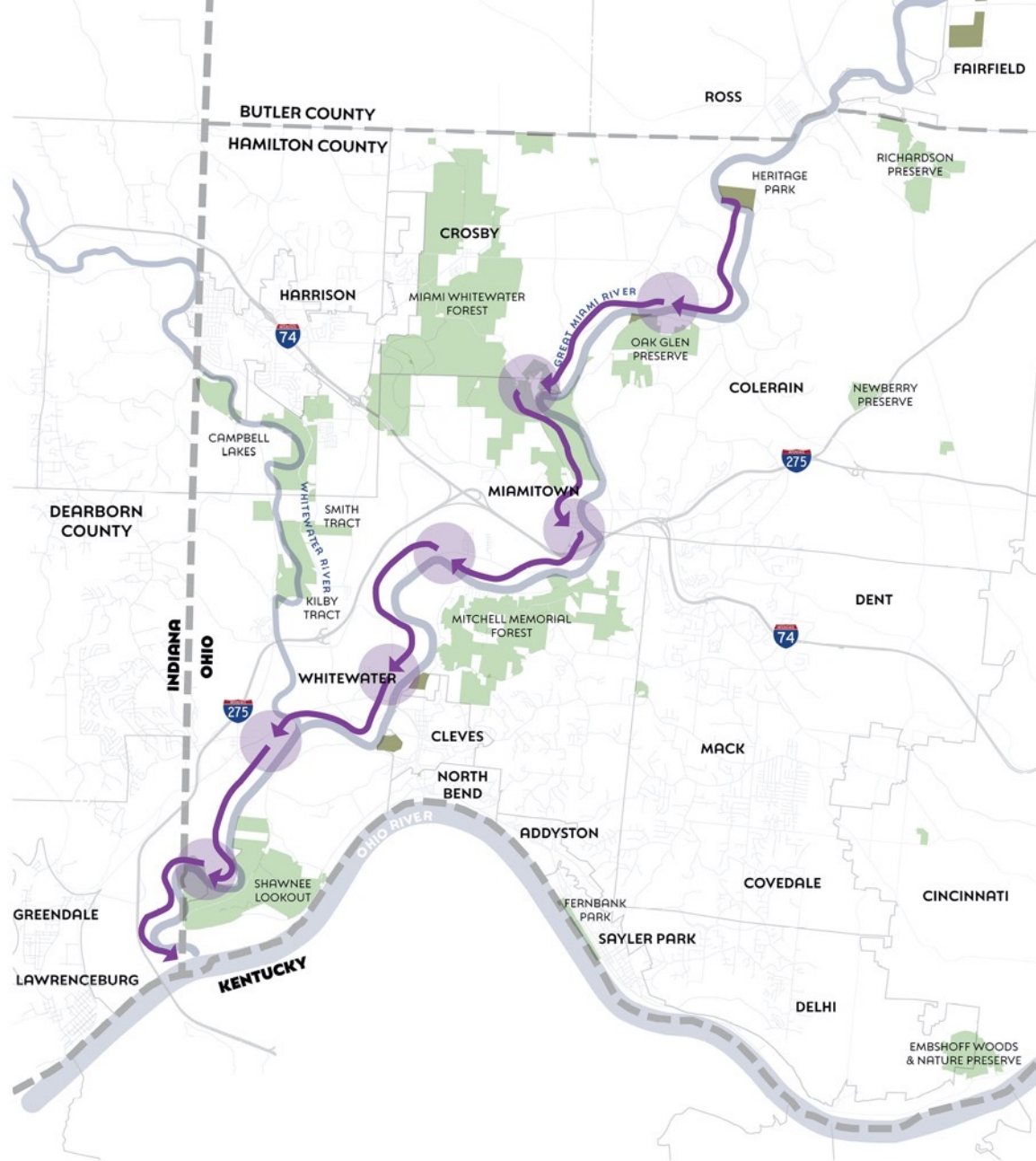


# REGIONAL INVENTORY

5 Mile Distribution  
Great Miami River

## LEGEND

 5MI DISTRIBUTION  
(NORTH TO SOUTH STARTING AT HERITAGE PARK)

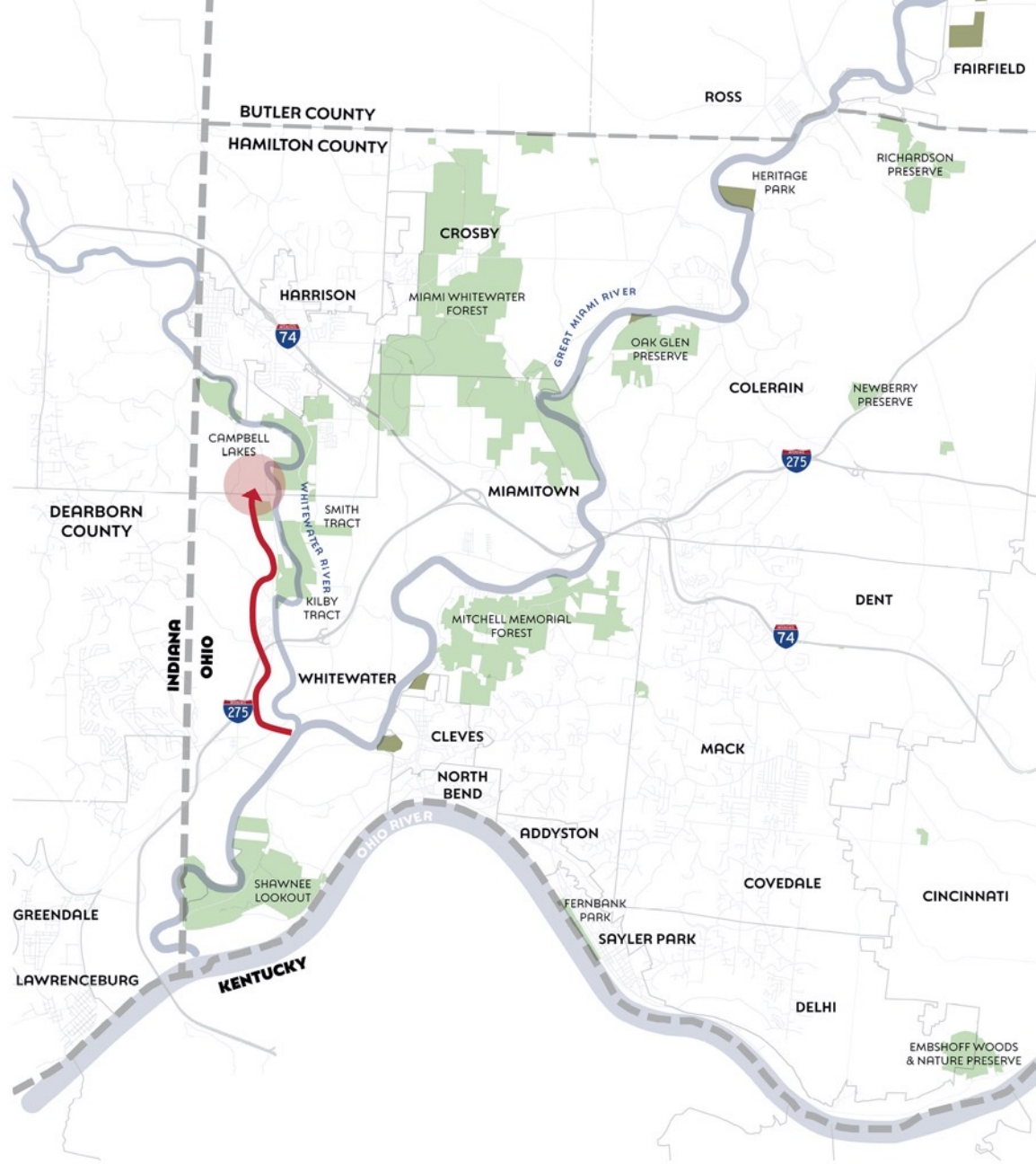


# REGIONAL INVENTORY

3 Mile Distribution  
Great Miami River

## LEGEND

 3MI DISTRIBUTION  
(NORTH TO SOUTH STARTING  
AT HERITAGE PARK)

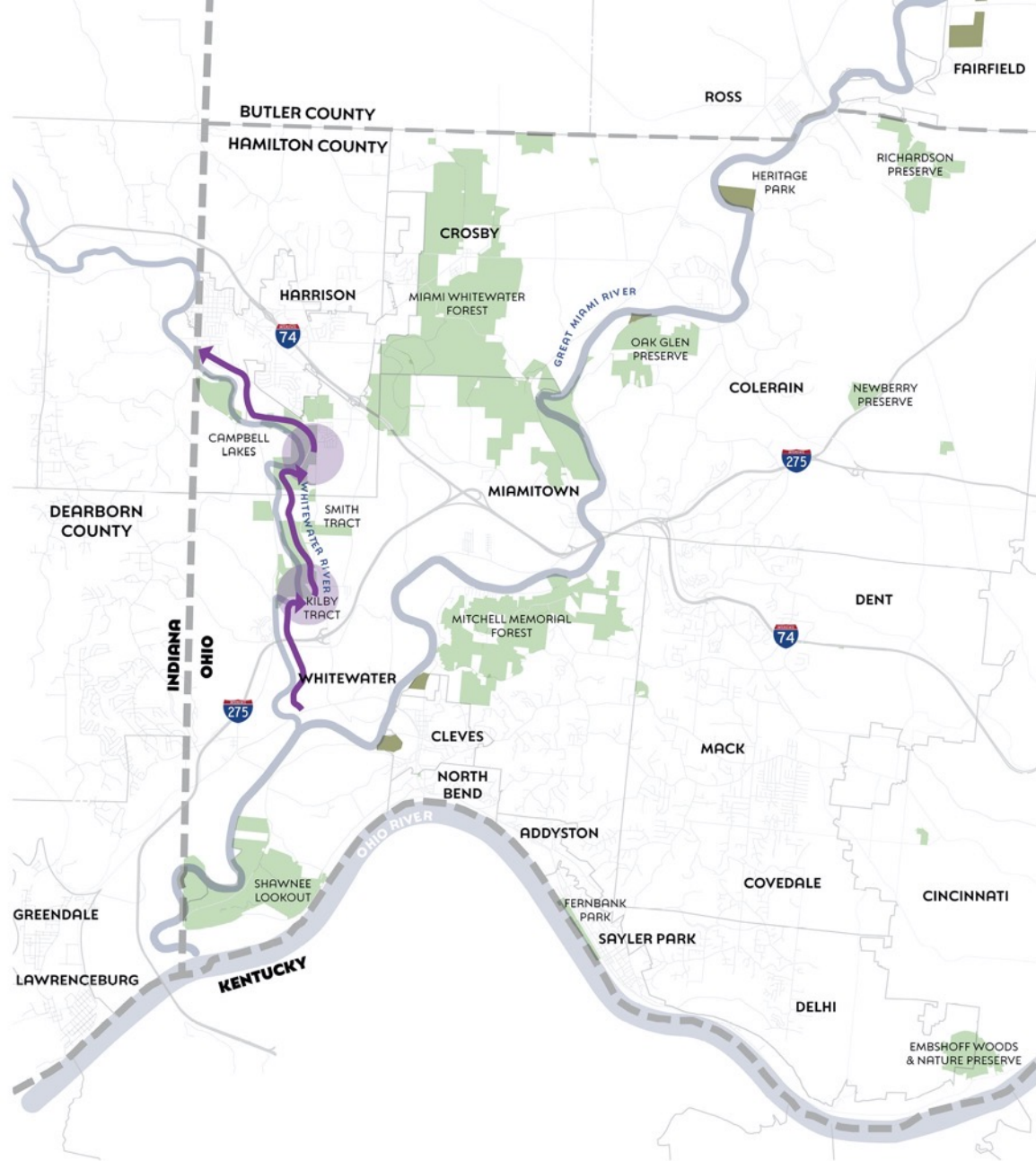


# REGIONAL INVENTORY

5 Mile Distribution  
Whitewater River

## LEGEND

 5MI DISTRIBUTION  
(NORTH TO SOUTH STARTING  
AT HERITAGE PARK)



# REGIONAL INVENTORY

3 Mile Distribution  
Whitewater River

## LEGEND

 3MI DISTRIBUTION  
(NORTH TO SOUTH STARTING  
AT HERITAGE PARK)

# ENGAGEMENT ACTIVITY

**Frame 1**  
River Access Sites - Great Miami River




**Frame 2**  
River Access Sites - Whitewater River



**Frame 3**  
NATURAL LAUNCH  
SLOW LIFTED TO LAUNCH/LOW, MAXIMUM LAUNCH/ACCESS



**Frame 4**  
Shared Use Trail



**Frame 5**

1) In terms of outreach, what have you found to be the best ways to engage your membership/constituencies?

2) What do you think your membership/constituencies will think about this project?

**Frame 6**



**Frame 7**  
ENHANCED LAUNCH  
MAXIMUM LAUNCH/ACCESS, LOW LAUNCH/ACCESS, MAXIMUM LAUNCH/ACCESS



**Frame 8**  
CONSTRUCTED LAUNCH  
MAXIMUM LAUNCH/ACCESS, LOW LAUNCH/ACCESS, MAXIMUM LAUNCH/ACCESS



**Frame 9**

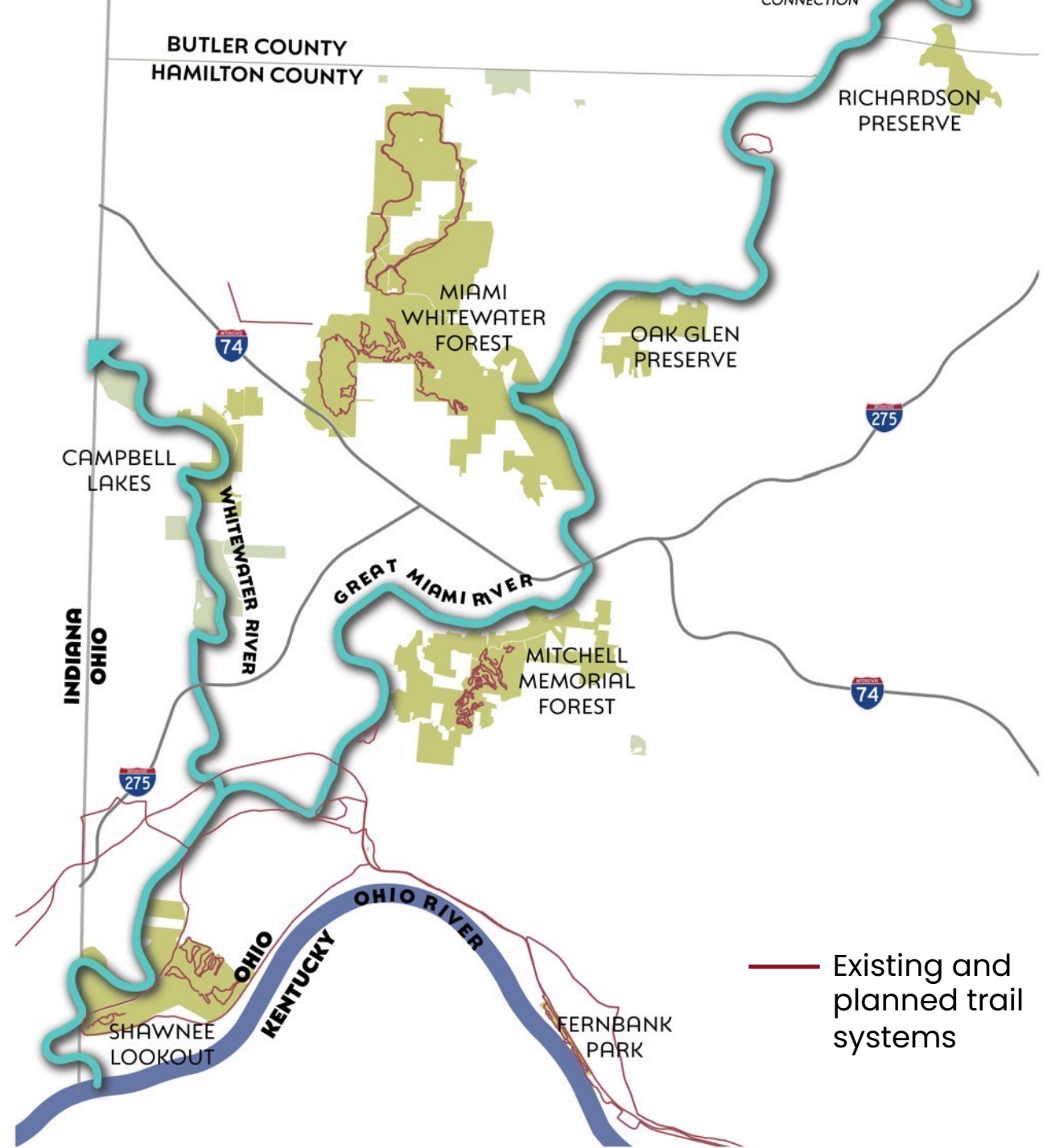
3) Are there any challenges that you anticipate in your community regarding project planning and implementation?

4) Do you know of any plans already taking shape that may help with project development and implementation?

# SHARED USE TRAIL

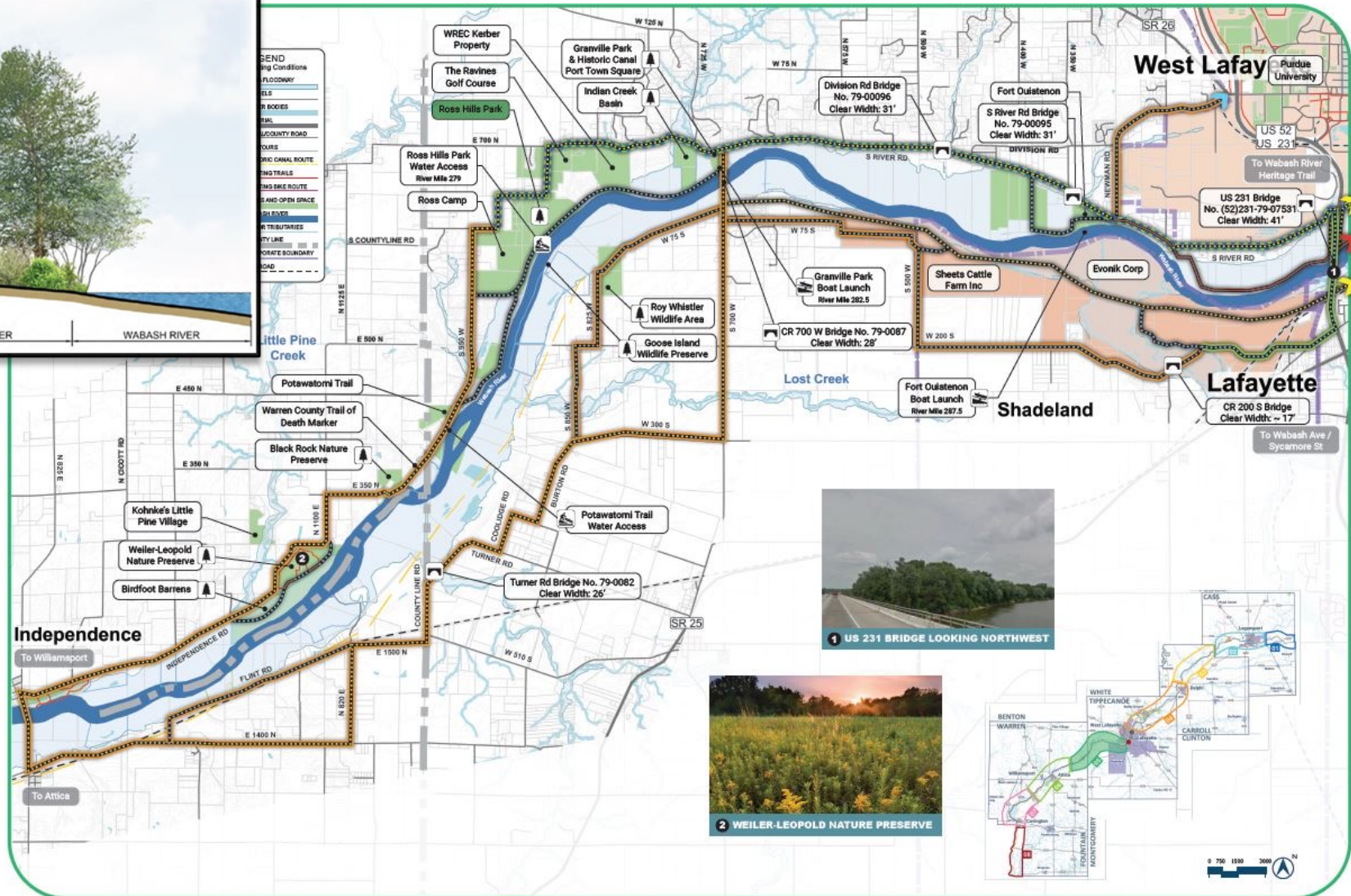
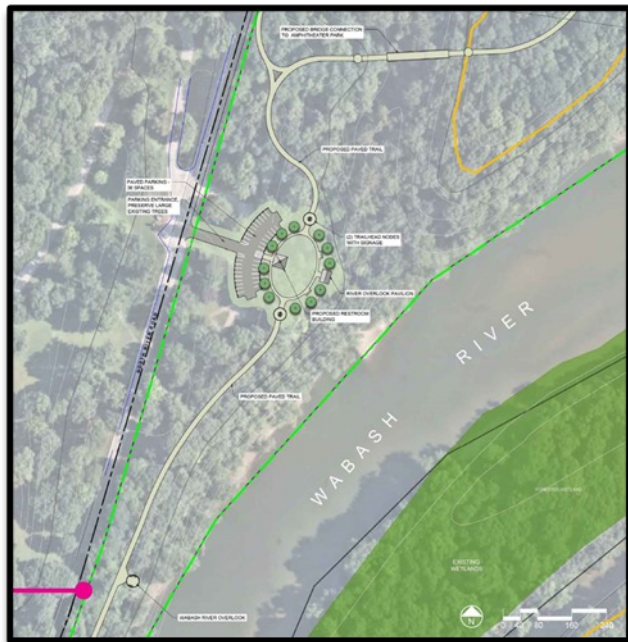
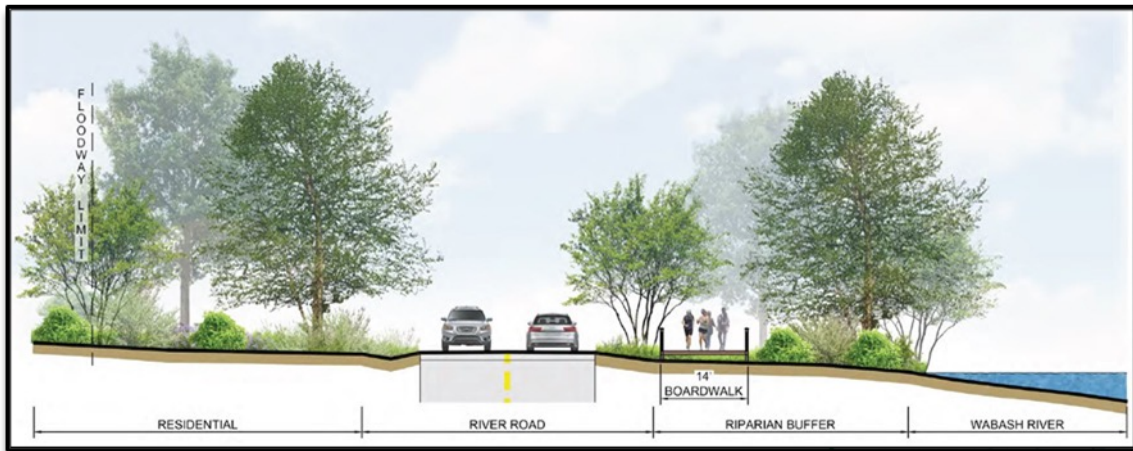


# NEW SHARED-USE TRAIL



# RIVER CORRIDOR PRECEDENTS

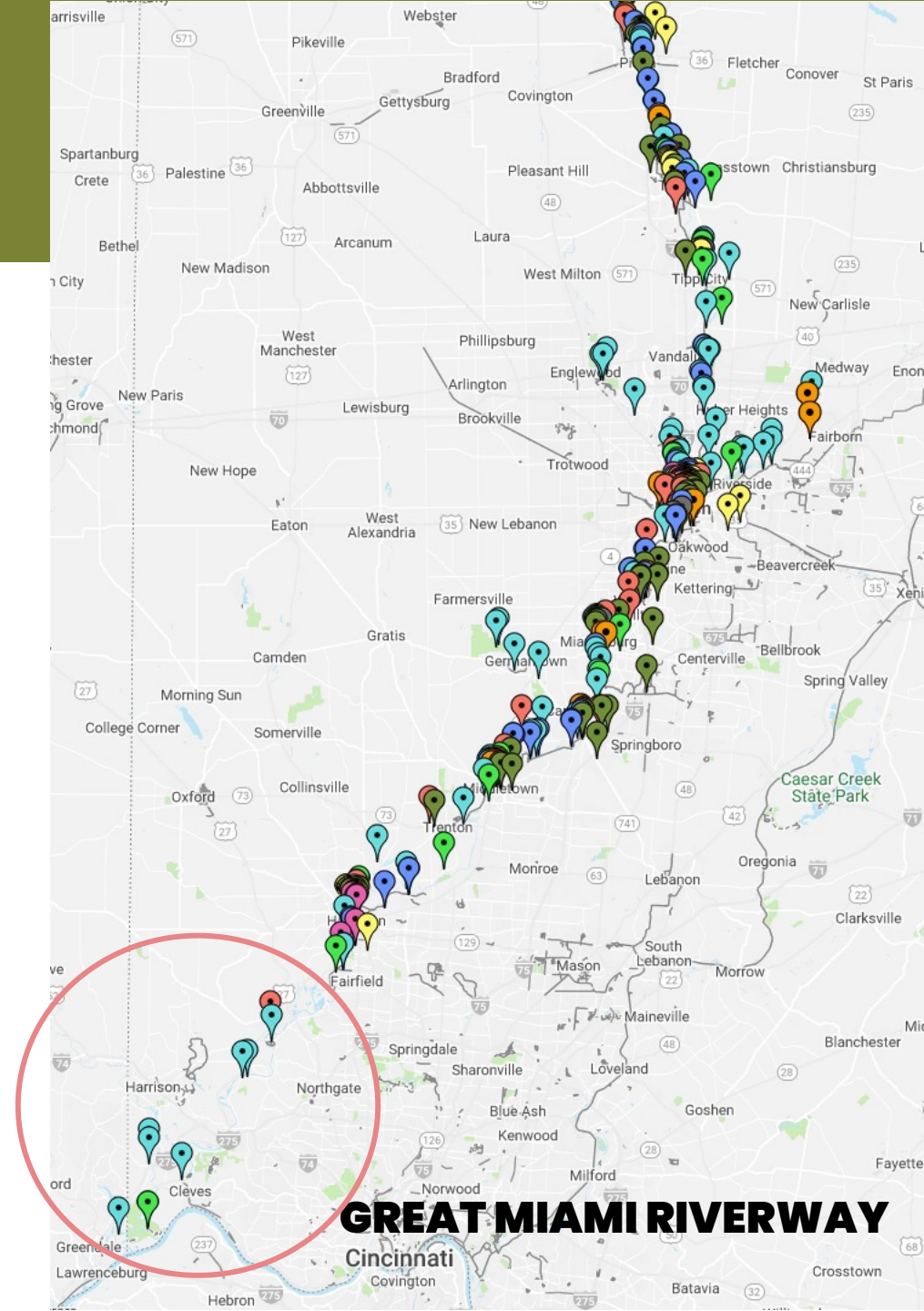
## Wabash River Greenway, Indiana





# NEW SHARED-USE TRAIL

- Will travel along the **Great Miami River corridor**
- Will **extend the Great Miami Riverway** through Hamilton County to the Ohio River
- Alignment alternatives will:
  - Allow users to enjoy changing landscapes
  - Maximize accessibility for all ages and abilities
  - Create new connections between parks, surrounding communities and other trails (existing and planned)
- Trail development needs partnerships** with local communities



# GREAT MIAMI RIVER CORRIDOR



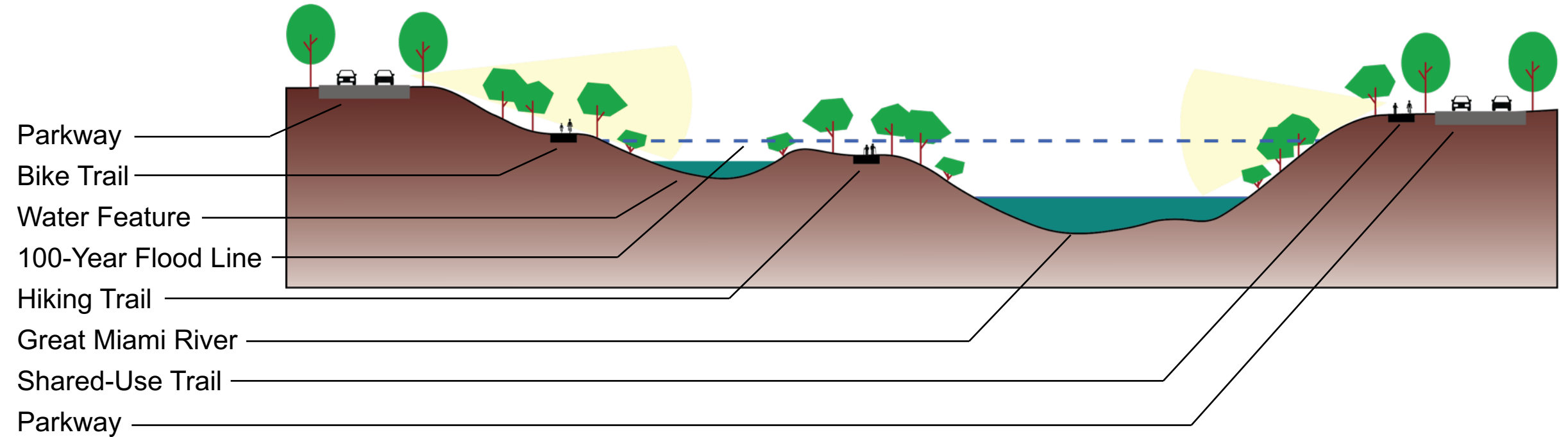
# GREAT MIAMI RIVER CORRIDOR



# GREAT MIAMI RIVER CORRIDOR



# PARKWAY / GREENWAY / BLUEWAY



 Scenic Parkways



 Shared-Use Trails



 Hiking Trails



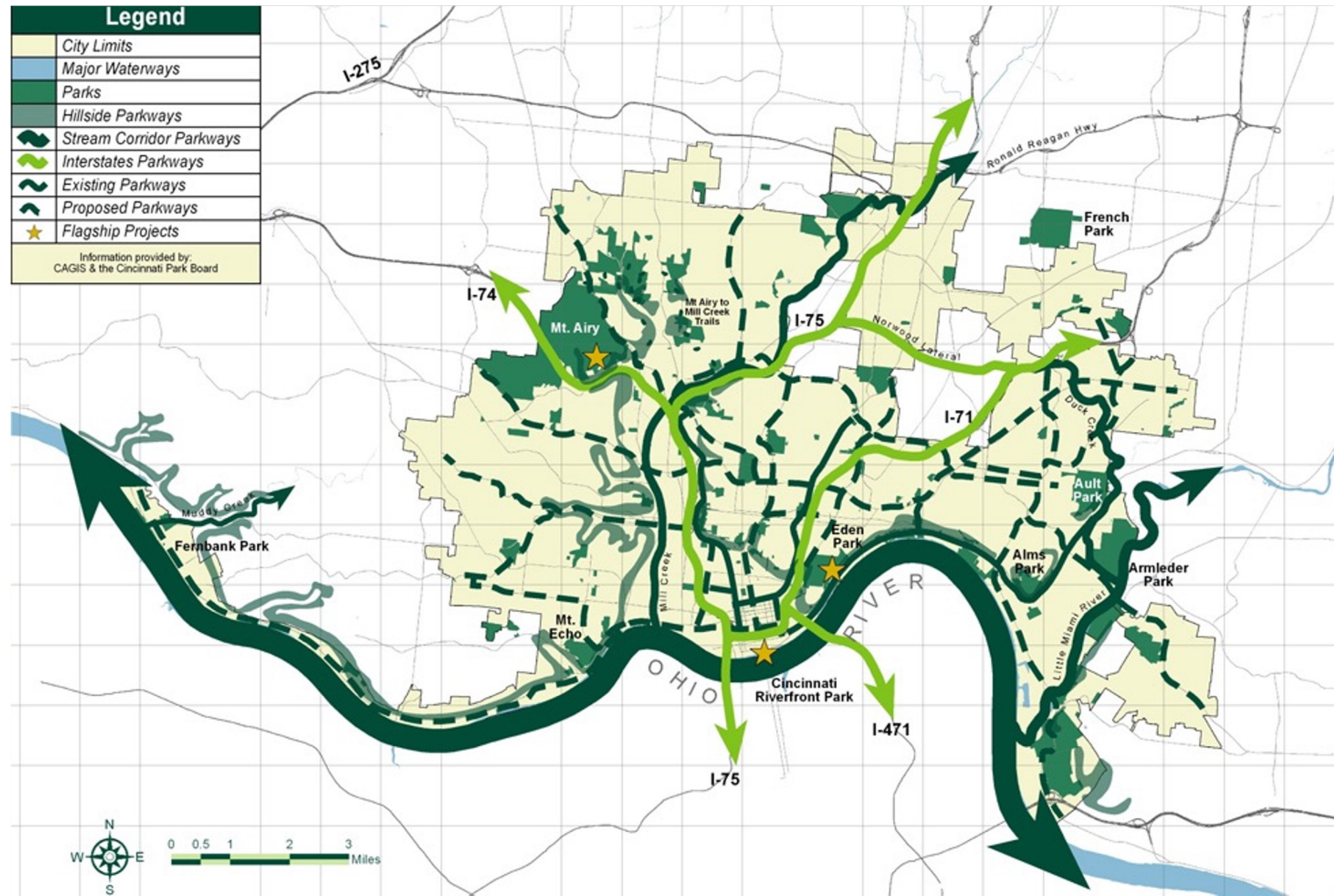
 Blueway Trail



# PARKWAY / GREENWAY / BLUEWAY

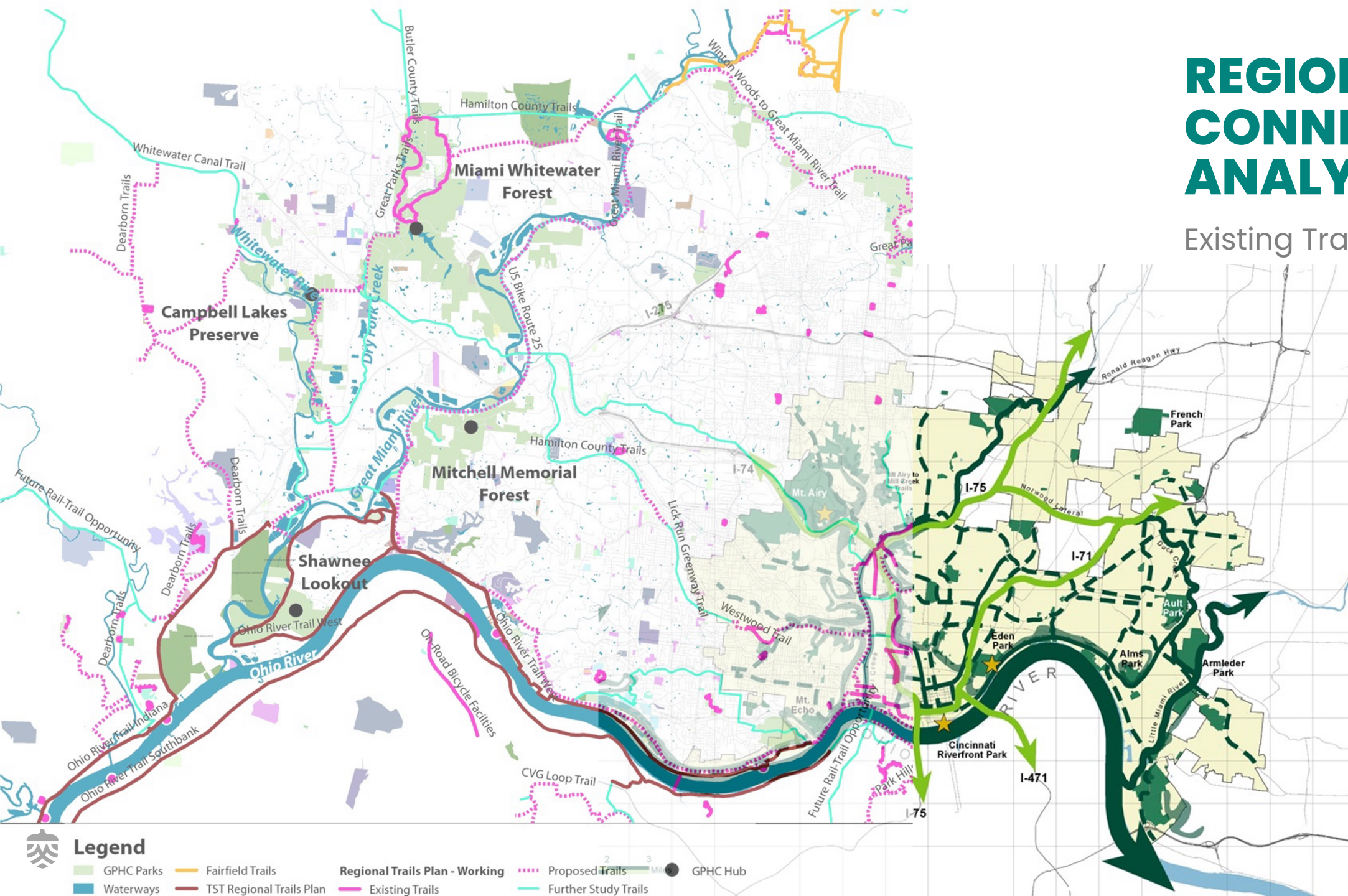


# REGIONAL CONNECTIVITY ANALYSIS



# REGIONAL CONNECTIVITY ANALYSIS

Existing Trail Network



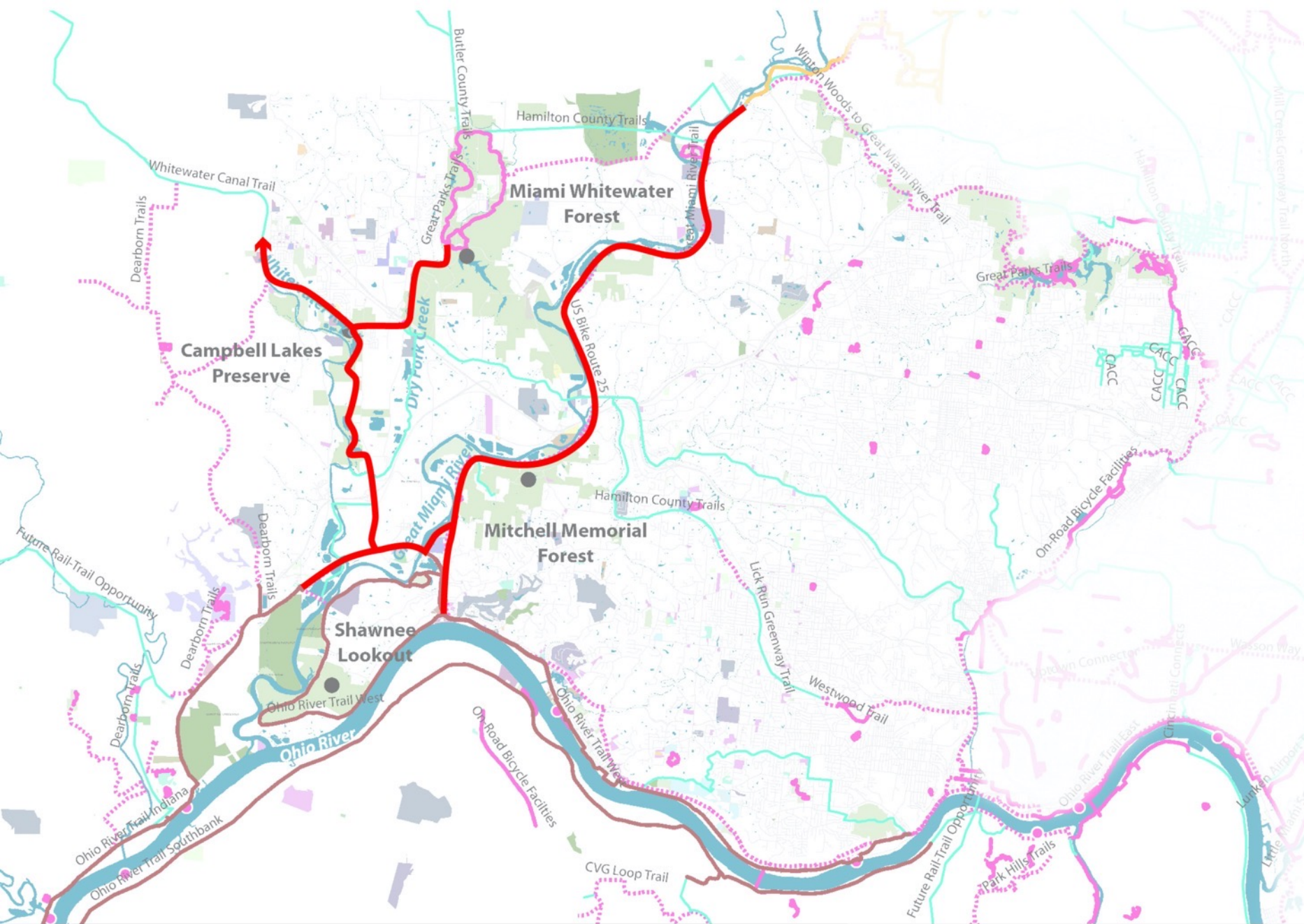
## Legend

- GPHC Parks
- Fairfield Trails
- Waterways
- TST Regional Trails Plan
- Regional Trails Plan - Working
- Proposed Trails
- Further Study Trails
- GPHC Hub



# REGIONAL CONNECTIVITY ANALYSIS

Spine Network

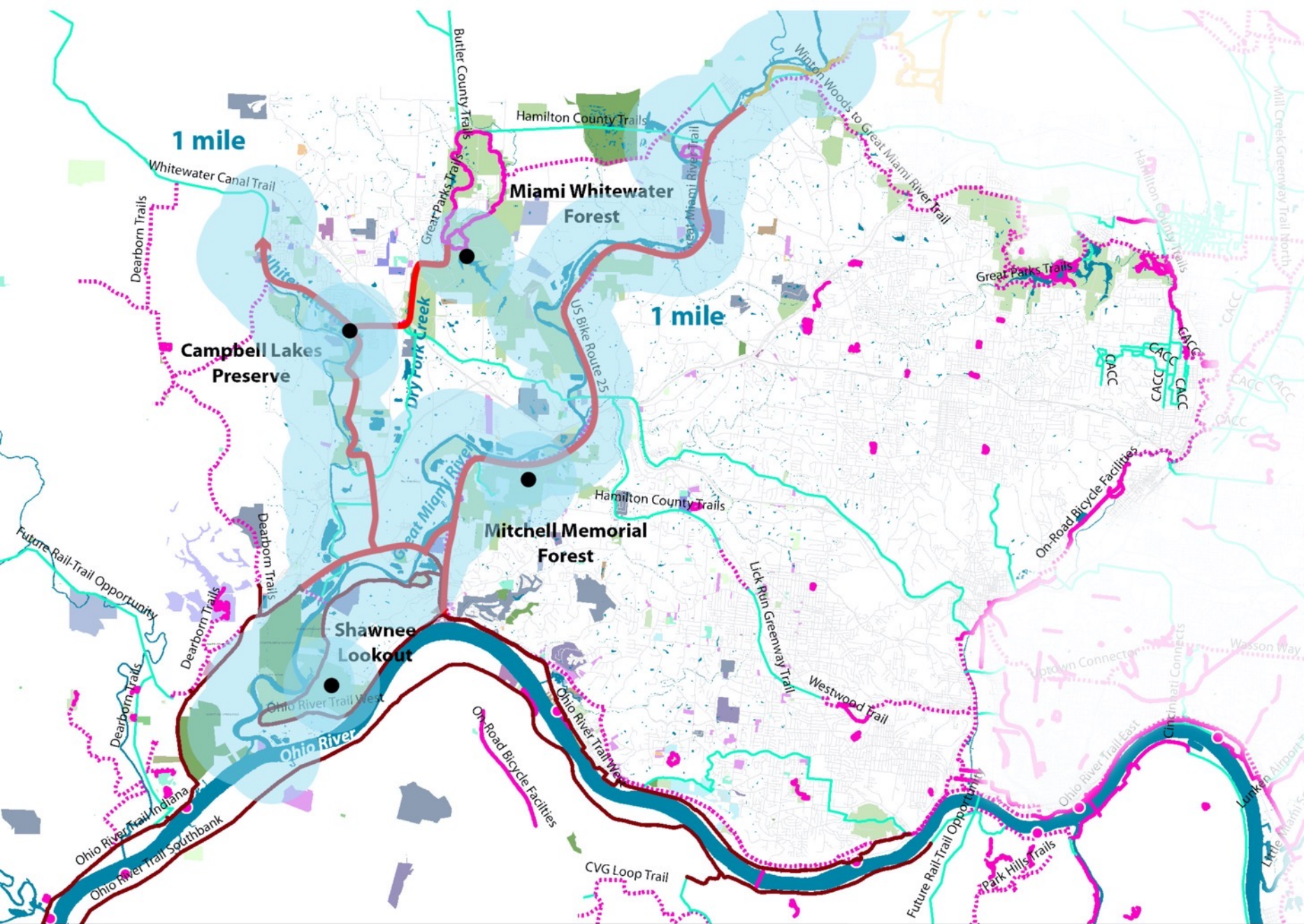


## Legend

- |            |                          |                                       |                      |                                |
|------------|--------------------------|---------------------------------------|----------------------|--------------------------------|
| GPHC Parks | Fairfield Trails         | <b>Regional Trails Plan - Working</b> | Proposed Trails      | GPHC Hub                       |
| Waterways  | TST Regional Trails Plan | Existing Trails                       | Further Study Trails | Great Miami / Whitewater Trail |

# REGIONAL CONNECTIVITY ANALYSIS

Connectivity of Trails & Hubs by 1 mile

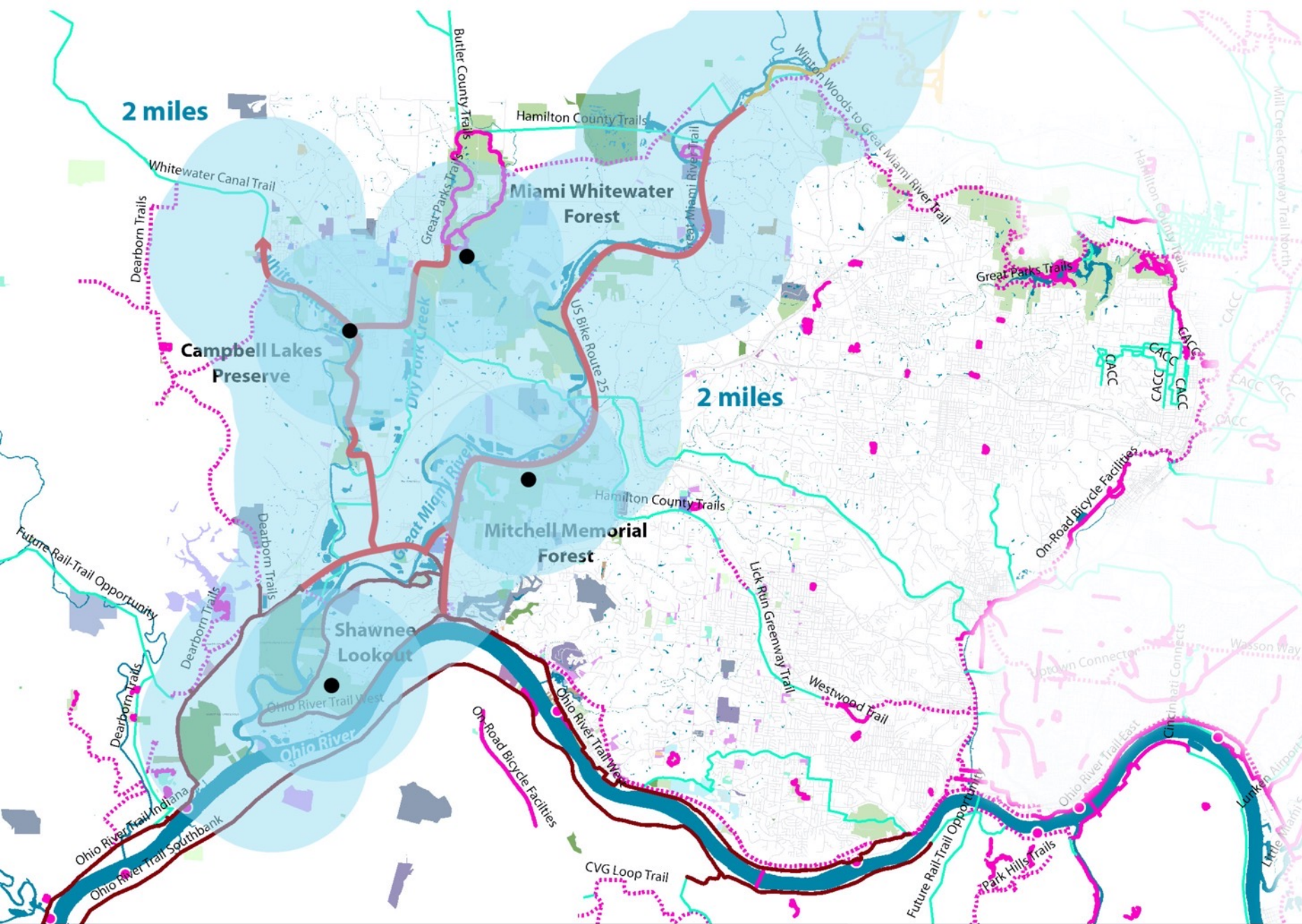


## Legend

- GPHC Parks
- Fairfield Trails
- Regional Trails Plan - Working
- Proposed Trails
- GPHC Hub
- Blueway Buffer (trail and hub)
- Waterways
- TST Regional Trails Plan
- Existing Trails
- Further Study Trails
- Great Miami / Whitewater Trail

# REGIONAL CONNECTIVITY ANALYSIS

Connectivity of Trails & Hubs by 2 miles

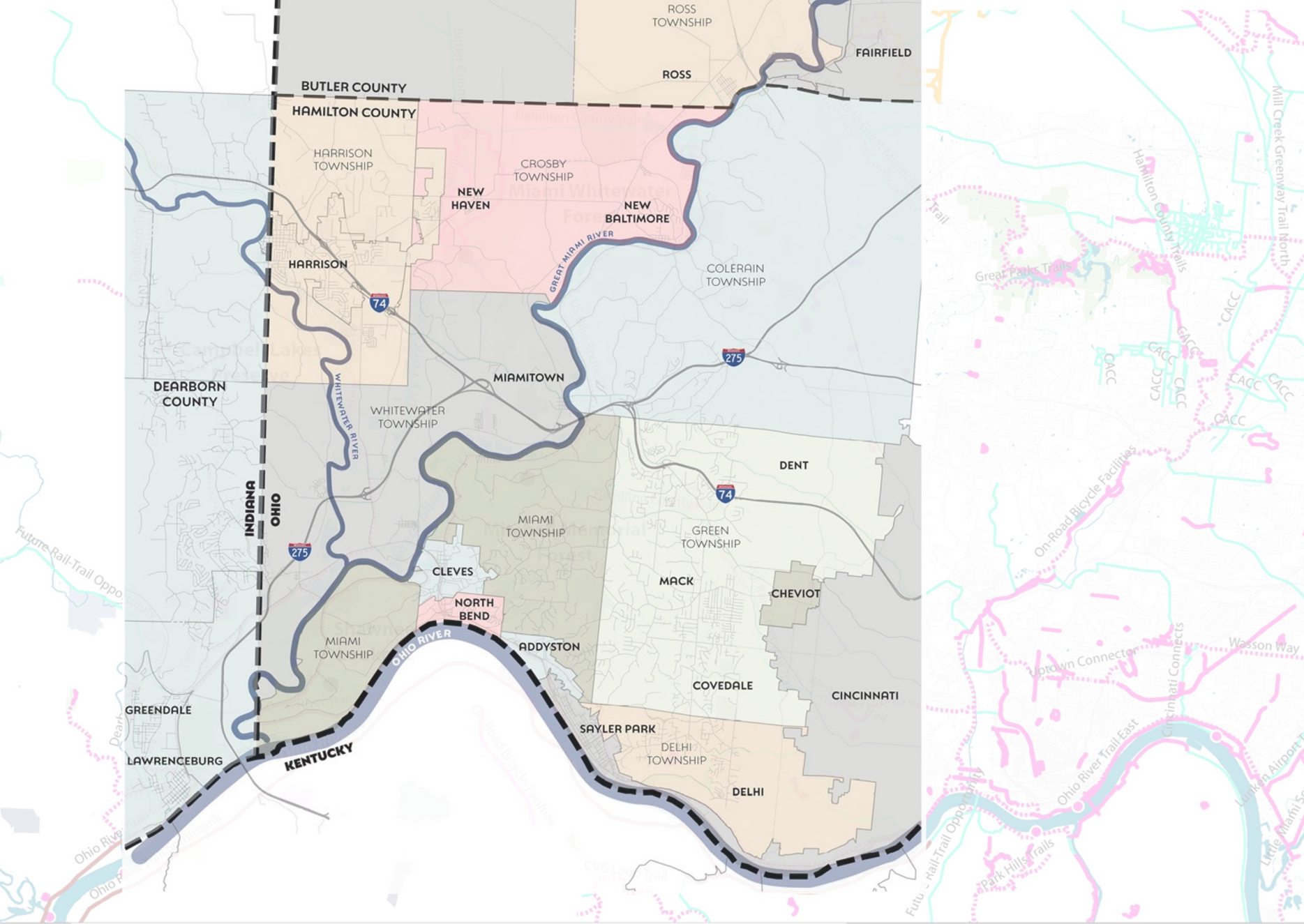


## Legend

- |            |                          |                                       |                      |                                |                                |
|------------|--------------------------|---------------------------------------|----------------------|--------------------------------|--------------------------------|
| GPHC Parks | Fairfield Trails         | <b>Regional Trails Plan - Working</b> | Proposed Trails      | GPHC Hub                       | Blueway Buffer (trail and hub) |
| Waterways  | TST Regional Trails Plan | Existing Trails                       | Further Study Trails | Great Miami / Whitewater Trail |                                |

# REGIONAL INVENTORY

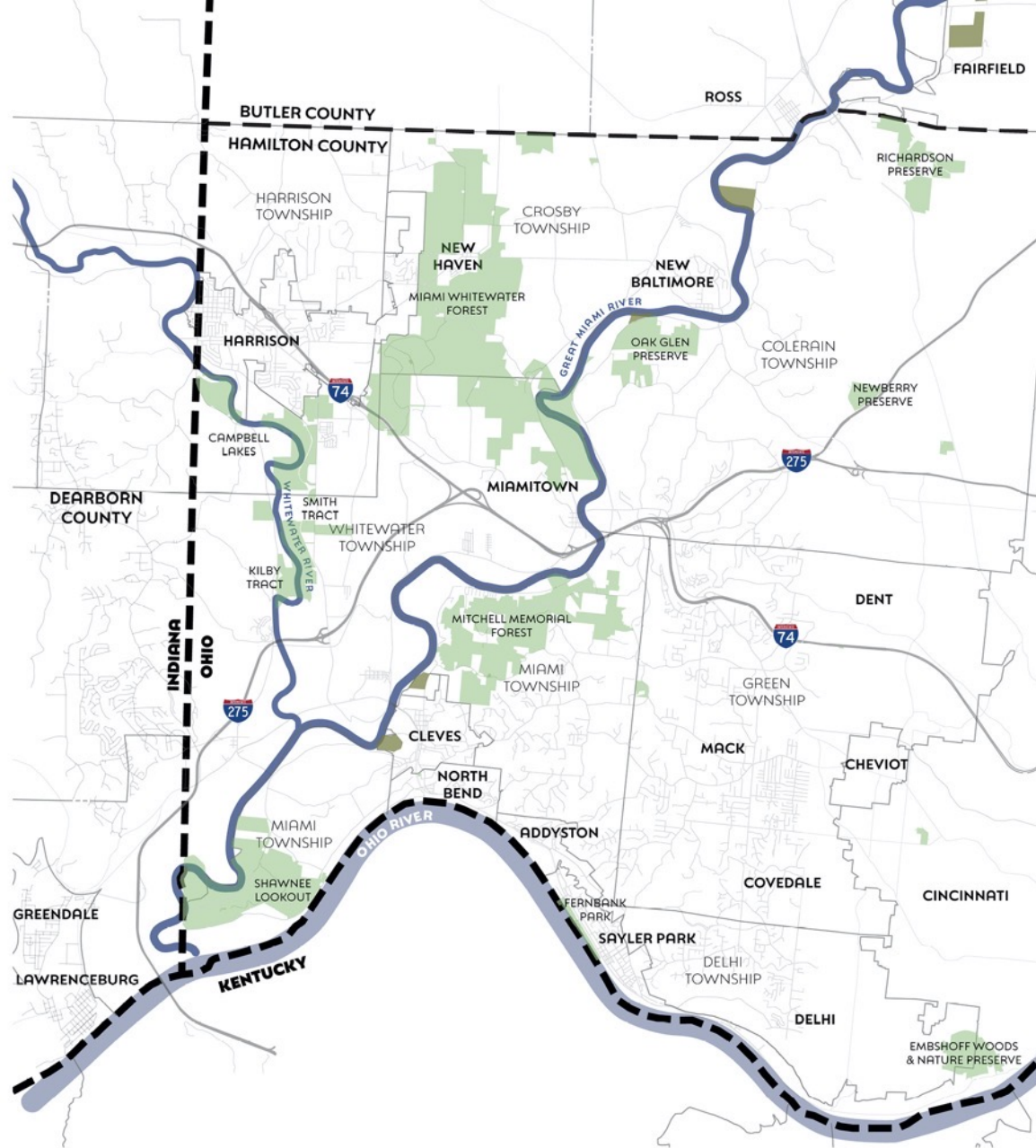
Townships



**Legend**

- GPHC Parks
- Fairfield Trail
- Regional Trails Plan - Working
- Proposed Trails
- GPHC Hub
- Waterways
- TST Regional Trails Plan
- Existing Trails
- Further Study Trails





# REGIONAL INVENTORY

## Parks

LEGEND

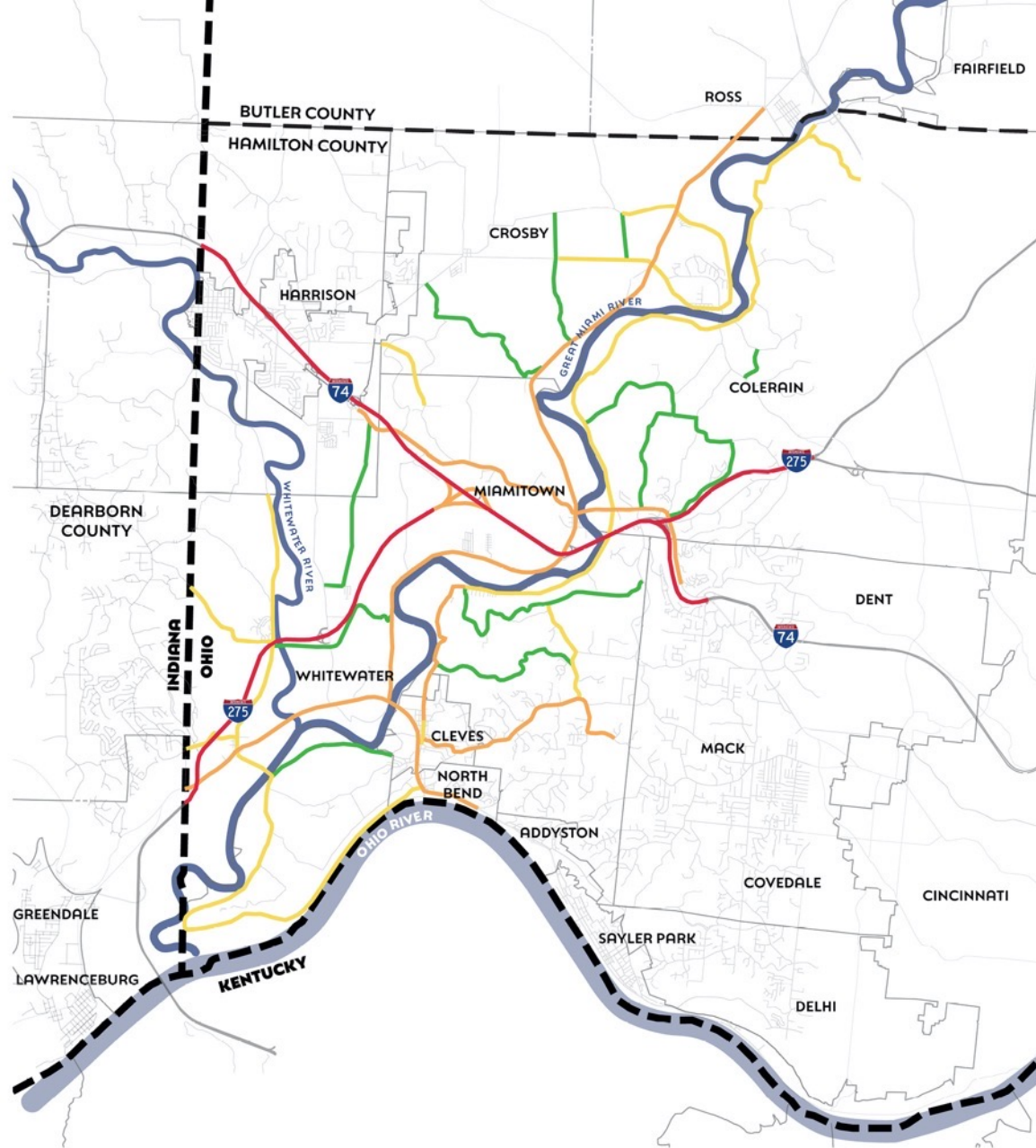
- GREAT PARKS OF HAMILTON COUNTY
- REGIONAL PARKS

### Great Parks

- Miami Whitewater Forest (**4,670 ac**)
- Mitchell Memorial Forest (**1,649 ac**)
- Campbell Lakes (**183 ac**)
- Shawnee Lookout (**2,017 ac**)

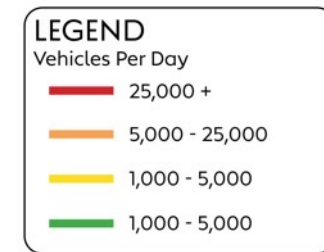
### Forest Preserves

- Richardson Preserve (**413 ac**)
- Oak Glen Preserve (**609 ac**)



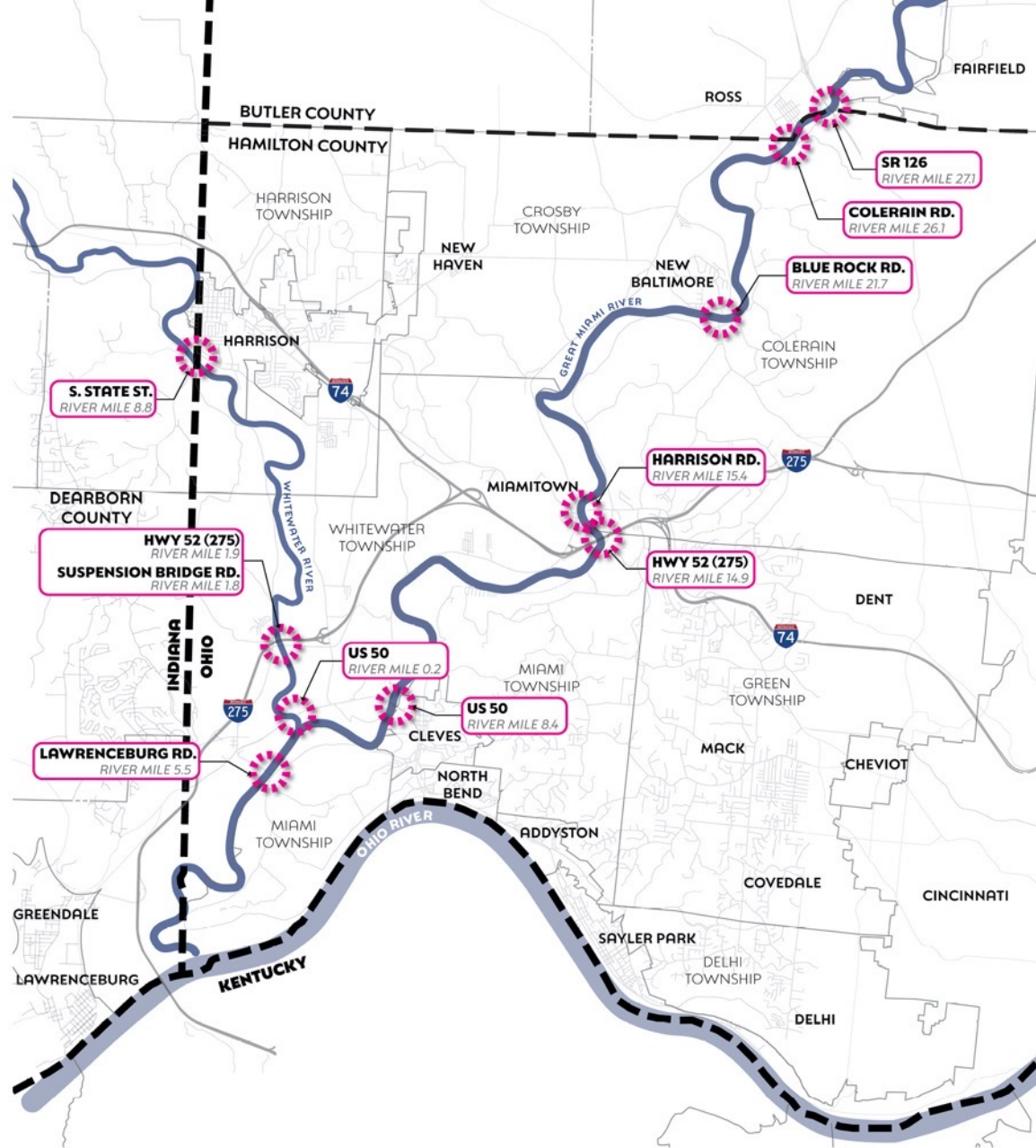
# REGIONAL INVENTORY

Traffic Counts



## Traffic Count Summary (Primary Roads):

- E. Miami River Rd. = **3,584** average
- SR 128 = **10,587** average
- Lawrenceburg Rd. = **3,733** average
- Brower Rd. = **2,056** average
- US 50 = **14,738** average



# REGIONAL INVENTORY

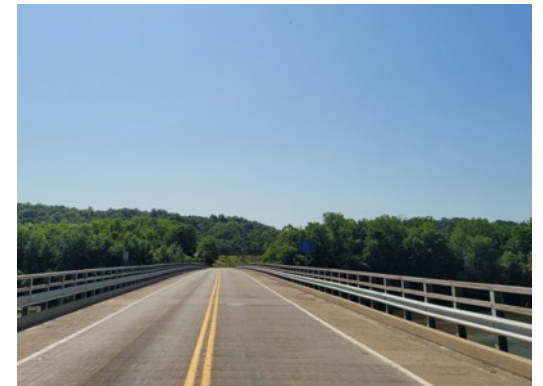
## River Crossings

**LEGEND**

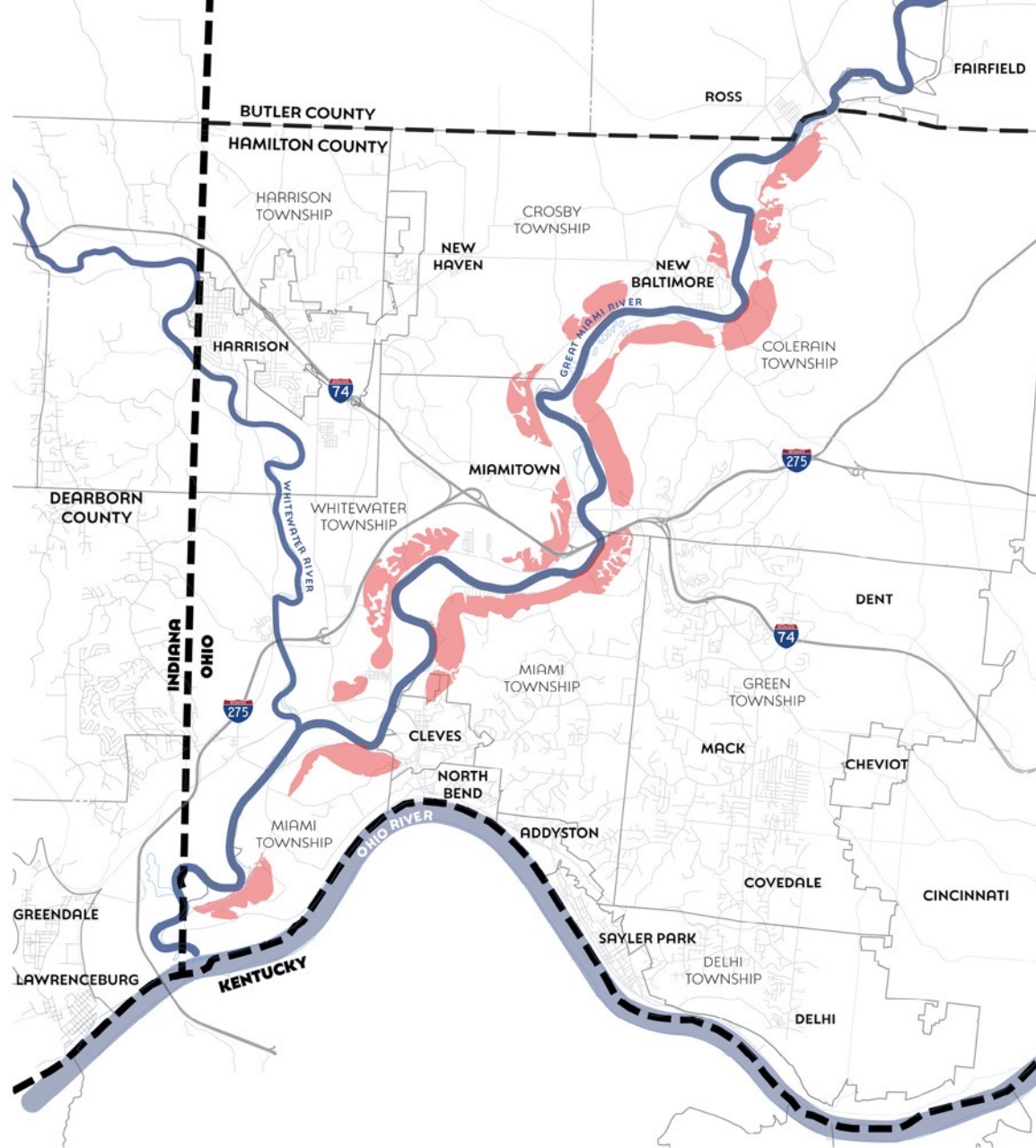
RIVER CROSSINGS

## Bridge Crossing Summary

- Great Miami River = **7 crossings**
  - Includes US 52/275 at mile 14.9
- Whitewater River = **4 crossings**
  - Includes US 52/275 at mile 1.9







# REGIONAL INVENTORY

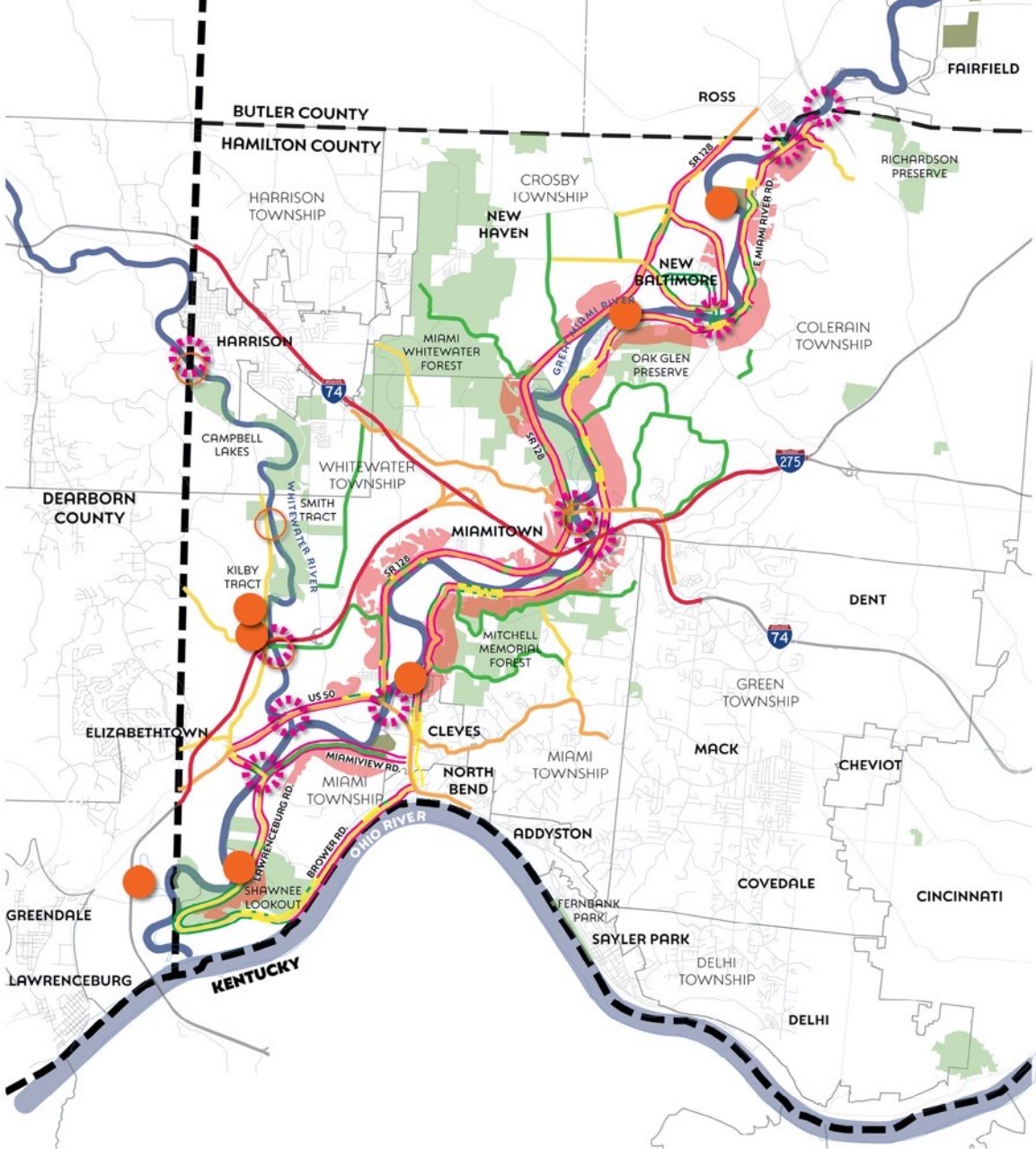
Challenging Terrain

**LEGEND**

**STEEP SLOPES**  
 - WITHIN 1/2 MILE OF RIVER CENTER



# REGIONAL INVENTORY



**LEGEND**  
Vehicles Per Day

- Red line: 25,000 +
- Orange line: 5,000 - 25,000
- Yellow line: 1,000 - 5,000
- Green line: 1,000 - 5,000

**LEGEND**

- Orange circle: EXISTING LAUNCH SITES PUBLIC
- White circle with orange outline: EXISTING LAUNCH SITES PRIVATE

**LEGEND**

- Light green square: GREAT PARKS OF HAMILTON COUNTY
- Dark green square: REGIONAL PARKS

**LEGEND**

- Pink starburst symbol: RIVER CROSSINGS

**LEGEND**

- Red shaded area: STEEP SLOPES - WITHIN 1/2 MILE OF RIVER CENTER

# ENGAGEMENT ACTIVITY

**Frame 1**  
River Access Sites - Great Miami River



**Frame 2**  
River Access Sites - Whitewater River



**Frame 3**  
NATURAL LAUNCH  
SLOW LIFTED TO LAUNCH/LOWE, MAXIMUM LAUNCH FOR ACCESS



**Frame 4**  
Shared Use Trail



**Frame 5**

1) In terms of outreach, what have you found to be the best ways to engage your membership/constituencies?

2) What do you think your membership/constituencies will think about this project?

**Frame 6**



**Frame 7**  
ENHANCED LAUNCH  
MAXIMUM LAUNCH FOR MAXIMUM LAUNCH/LOWE, MAXIMUM LAUNCH FOR ACCESS



**Frame 8**  
CONSTRUCTED LAUNCH  
MAXIMUM LAUNCH FOR MAXIMUM LAUNCH/LOWE, MAXIMUM LAUNCH FOR ACCESS



**Frame 9**

3) Are there any challenges that you anticipate in your community regarding project planning and implementation?

4) Do you know of any plans already taking shape that may help with project development and implementation?



# PUBLIC OUTREACH

*Public participation in the planning process is important. Input received will be used to guide plan development.*



**Great Parks**

# PLANNED PUBLIC ENGAGEMENT



- ✦ **Advisory Committee**

2023/2024 – up to 4 meetings

- ✦ **Stakeholder Focus Groups**

June/July/August 2023

- ✦ **Public Open House**

July 13, 2023

- ✦ **Surveys, Newsletters, & Updates**

July 2023, Late 2023 and Early 2024

- ✦ **Community Road Shows**

Summer – Fall 2023 and Spring 2024

- ✦ **Social Media**

- ✦ [GreatParks.org/westregiontrails](https://GreatParks.org/westregiontrails)



# STAKEHOLDER FOCUS GROUPS



✿ **Purpose: Gather more specific and detailed input to help inform plan development and implementation strategies**

✿ **Potential focus groups:**

- Community leadership, elected officials, and representatives of local Planning & Zoning, Parks, and Public Works/Services departments
- Local historians
- Accessibility groups
- Representatives of large hiking, biking, and paddling interest groups
- Representatives of local hiking, biking, and paddling businesses
- Leadership from business development organizations (i.e., chambers of commerce, visitors bureaus)

✿ • **Are there others we should consider?**

# COMMUNITY ROAD SHOWS



## 🌿 Purpose:

- Raise awareness
- Build excitement
- Gather community input

🌿 Targeting community festivals, fairs, civic events, sporting events, etc.

🌿 What events should we consider in your community?



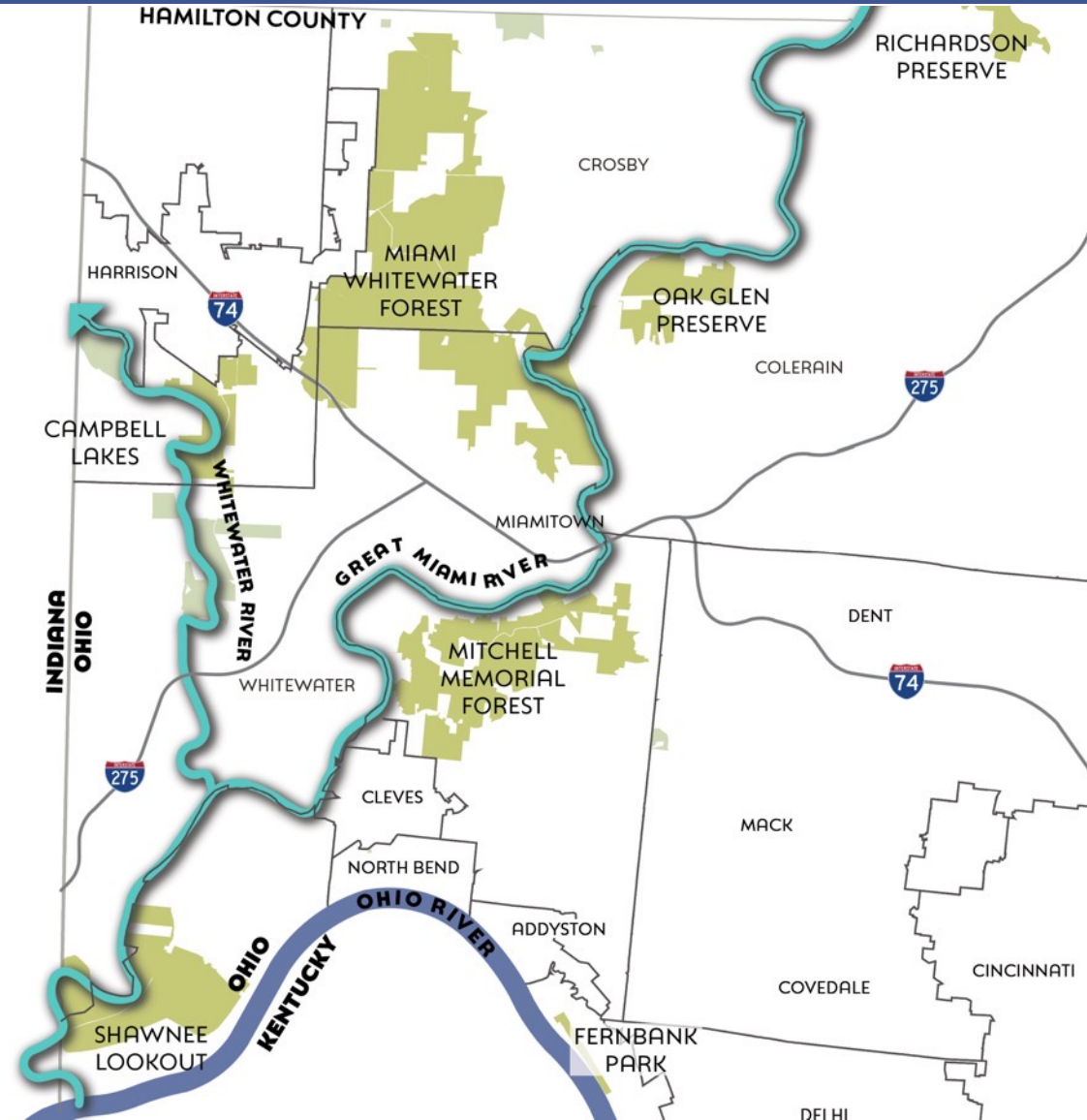
# UNINCORPORATED COMMUNITY ENGAGEMENT



## Unincorporated communities in the study area:

- Elizabethtown – Whitewater Township
- Grandview – Miami Township
- Hooven – Whitewater Township
- Miami Heights – Miami Township
- Miamitown – Whitewater Township
- New Baltimore – Crosby Township
- Ross – Ross Township

## What is the best way to engage these communities?





# ENGAGEMENT ACTIVITY

**Frame 1**  
River Access Sites - Great Miami River



**Frame 2**  
River Access Sites - Whitewater River



**Frame 3**  
NATURAL LAUNCH  
SLOPE GRATED TO IMPROVE LAUNCH, MAINTAIN WATERFLOW ACCESS



**Frame 4**  
Shared Use Trail



**Frame 5**

1) In terms of outreach, what have you found to be the best ways to engage your membership/constituencies?

2) What do you think your membership/constituencies will think about this project?

**Frame 6**



**Frame 7**  
ENHANCED LAUNCH  
IMPROVE TRAIL TO ACCOMMODATE LOOSE PATTY COMPOSTS (UNWANTED)



**Frame 8**  
CONSTRUCTED LAUNCH  
ENHANCE TRAIL TO ACCOMMODATE WINDUP SKIERS, BICYCLISTS, ETC.



**Frame 9**

3) Are there any challenges that you anticipate in your community regarding project planning and implementation?

4) Do you know of any plans already taking shape that may help with project development and implementation?

Logos: West Region Blount County & Trail System, Blount County, SAGOR, U.S. Army Corps of Engineers, etc.



# TIMELINE

*The West Region Blueway & Trail System master plan is scheduled to be completed in mid-2024.*



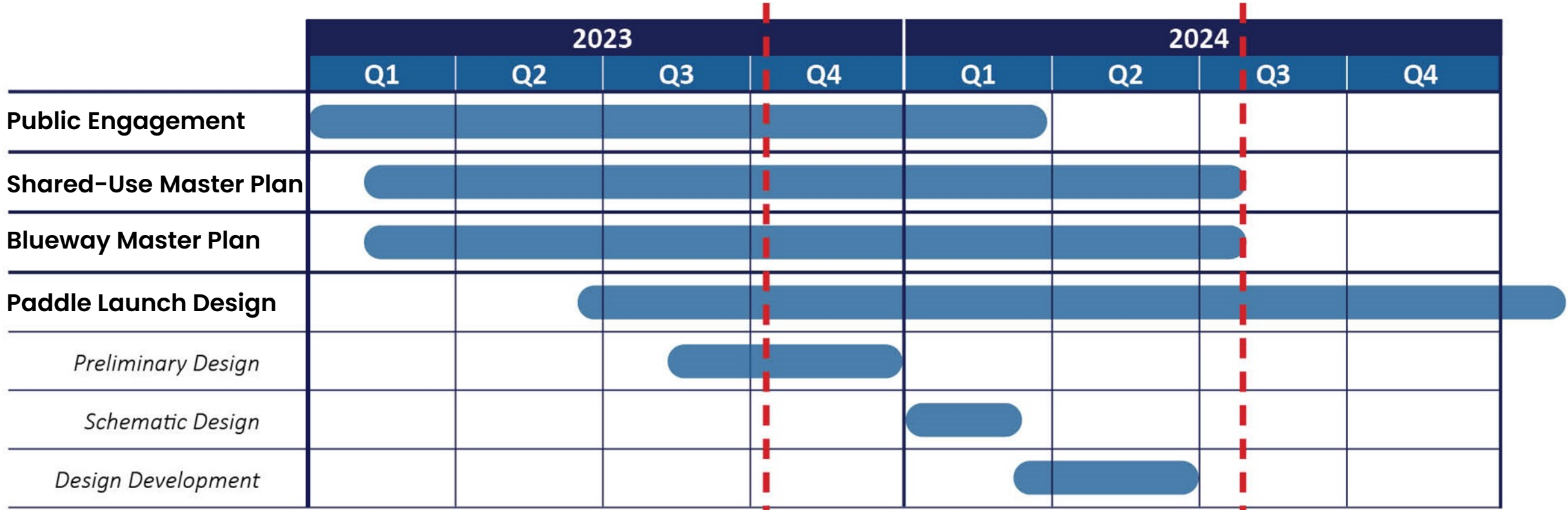
**Great Parks**

# PROJECT TIMELINE



Shared-Use & Blueway Master Plans  
DRAFT

Shared-Use & Blueway Master Plans  
FINAL





# NEXT STEPS



Great Parks

# NEXT STEPS



## 🌿 Public Engagement

- Promote website: [GreatParks.org/westregiontrails](https://GreatParks.org/westregiontrails)
- Host Public Open House: **July 13<sup>th</sup>** at **Whitewater Crossing Christian Church** gym
- Launch Virtual Open House & survey – open until August 7<sup>th</sup>
- Schedule focus group meetings
- Attendance at road shows/pop-up events

## 🌿 Prepare draft plan

